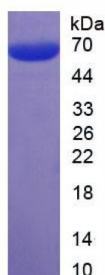
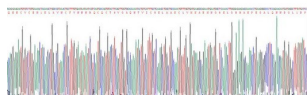


Human Epithelial Cell Adhesion Molecule (EPCAM) Protein

Catalogue No.: abx652155



Human Epithelial Cell Adhesion Molecule (EPCAM) Protein



Gene sequence extract of Human Epithelial Cell Adhesion Molecule (EPCAM) Protein.

Epithelial Cell Adhesion Molecule (EPCAM) Protein is a Recombinant protein from Human.

Target: Epithelial Cell Adhesion Molecule (EPCAM)

Origin: Human

Expression: Recombinant

Tested Applications: WB, SDS-PAGE

Host: E. coli

Conjugation: Unconjugated

Form: Lyophilized

Activity: Not tested

Purity: > 95%

Datasheet

Version: 5.0.0
Revision date: 06 Sep 2025



Reconstitution:	To keep the original salt concentration, we recommend reconstituting to the original concentration prior to lyophilization (see Concentration) in ddH ₂ O. If a lower concentration is required, dilute in 20 mM Tris, 150 mM NaCl, pH 8.0. If a higher concentration is required, the product can be reconstituted directly in 20 mM Tris, 150 mM NaCl, pH 8.0, though please note that this will change the overall salt concentration. The stock concentration should be between 0.1-1.0 mg/ml. Do not vortex.
Storage:	Store at 2-8°C for up to one month. For long-term storage, store at -80°C. Avoid repeated freeze/thaw cycles.
UniProt Primary AC:	P16422 (UniProt , ExPASy)
KEGG:	hsa:4072
String:	9606.ENSP00000263735
Molecular Weight:	Calculated MW: 57.3 kDa Observed MW (SDS-PAGE): 62 kDa
Sequence Fragment:	Gln24-Leu264
Tag:	N-terminal His tag and GST tag
Buffer:	Prior to lyophilization: 20 mM Tris, 150 mM NaCl, pH 8.0, containing 1 mM EDTA, 1 mM DTT, 0.01% Sarcosyl, 5% Trehalose and Proclin-300.
Concentration:	Prior to lyophilization: 200 µg/ml
Note:	THIS PRODUCT IS FOR RESEARCH USE ONLY. NOT FOR USE IN DIAGNOSTIC, THERAPEUTIC OR COSMETIC PROCEDURES. NOT FOR HUMAN OR ANIMAL CONSUMPTION.