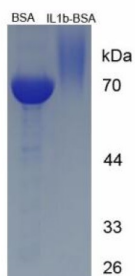


Mouse Interleukin-1 Beta (IL1B) Peptide (BSA)

Catalogue No.: abx651814



Interleukin-1 Beta (IL1B) Peptide (BSA) is a protein from Mouse.

Target: Interleukin-1 Beta (IL1B)

Research Area: Tumor Immunity, Infection Immunity

Origin: Mouse

Expression: Synthetic

Tested Applications: WB, SDS-PAGE

Host: Synthetic

Conjugation: BSA

Form: Lyophilized

Activity: Not tested

Purity: > 90%

Reconstitution: To keep the original salt concentration, we recommend reconstituting to the original concentration prior to lyophilization (see Concentration) in ddH₂O. If a lower concentration is required, dilute in PBS, pH 7.4. If a higher concentration is required, the product can be reconstituted directly in PBS, pH 7.4, though please note that this will change the overall salt concentration. The stock concentration should be between 0.1-1.0 mg/ml. Do not vortex.

Storage: Store at 2-8°C for up to one month. For long-term storage, store at -80°C. Avoid repeated freeze/thaw cycles.

UniProt Primary AC: P10749 ([UniProt](#), [ExPASy](#))

Datasheet

Version: 4.0.0

Revision date: 05 Sep 2025



Gene Symbol: IL1B

GeneID: [16176](#)

KEGG: mmu:16176

String: [10090.ENSMUSP00000028881](#)

Sequence Fragment: Leu199-Lys214

Buffer: Prior to lyophilization: PBS, pH 7.4.

Concentration: Prior to lyophilization: 200 µg/ml

Note: THIS PRODUCT IS FOR RESEARCH USE ONLY. NOT FOR USE IN DIAGNOSTIC, THERAPEUTIC OR COSMETIC PROCEDURES. NOT FOR HUMAN OR ANIMAL CONSUMPTION.

For Reference Only