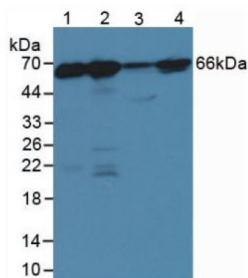
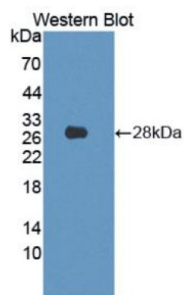


Lamin B1 (LMNB1) Antibody

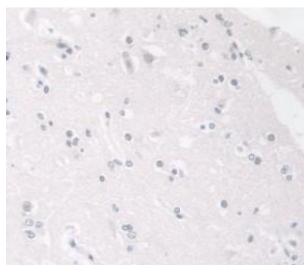
Catalogue No.: abx132259



Western blot analysis of Lane 1: Human Hela Tissue, Lane 2: Human Lung Tissue, Lane 3: Porcine Brain Tissue, Lane 4: Porcine Kidney Tissue.



Western blot analysis of recombinant Human LMNB1.



IHC-P analysis of Human brain tissue, with DAB staining.

Lamin B1 (LMNB1) Antibody is a Rabbit Polyclonal against Lamin B1 (LMNB1).

Target: Lamin B1 (LMNB1)

Clonality: Polyclonal

Reactivity: Human

Tested Applications: WB

Host: Rabbit

Recommended dilutions: WB: 0.5-2 µg/ml. Optimal dilutions/concentrations should be determined by the end user.

Conjugation: Unconjugated

Datasheet

Version: 2.0.0

Revision date: 27 Aug 2025



Form:	Liquid
Purification:	Purified by antigen-specific affinity chromatography, followed by Protein A affinity chromatography.
Storage:	Aliquot and store at -20°C. Avoid repeated freeze/thaw cycles.
Buffer:	0.01 M PBS, pH 7.4, containing 0.05% Proclin-300, 50% glycerol.
Note:	THIS PRODUCT IS FOR RESEARCH USE ONLY. NOT FOR USE IN DIAGNOSTIC, THERAPEUTIC OR COSMETIC PROCEDURES. NOT FOR HUMAN OR ANIMAL CONSUMPTION.

For Reference Only