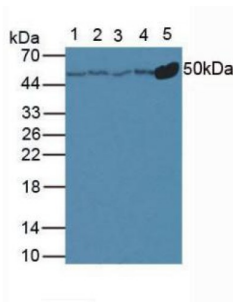
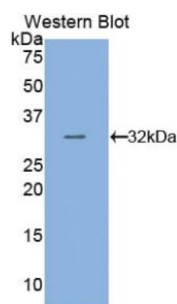


## Tubulin Beta (TUBB) Antibody

Catalogue No.: abx132255



Western blot analysis of Rat Liver Tissue, Lane 2: Rat Kidney Tissue, Lane 3: Mouse Liver Tissue, Lane 4: Mouse Kidney Tissue, Lane 5: Mouse Brain Tissue.



Western blot analysis of recombinant Human TUBB.

Tubulin Beta (TUBB) Antibody is a Rabbit Polyclonal against Tubulin Beta (TUBB).

**Target:** Tubulin Beta (TUBB)

**Clonality:** Polyclonal

**Reactivity:** Human

**Tested Applications:** WB

**Host:** Rabbit

**Recommended dilutions:** WB: 0.5-2 µg/ml. Optimal dilutions/concentrations should be determined by the end user.

**Conjugation:** Unconjugated

**Form:** Liquid

**Purification:** Purified by antigen-specific affinity chromatography, followed by Protein A affinity chromatography.

**Storage:** Aliquot and store at -20°C. Avoid repeated freeze/thaw cycles.

**Buffer:** 0.01 M PBS, pH 7.4, containing 0.05% Proclin-300, 50% glycerol.

# Datasheet

Version: 3.0.0

Revision date: 03 Sep 2025



**Note:**

THIS PRODUCT IS FOR RESEARCH USE ONLY. NOT FOR USE IN DIAGNOSTIC, THERAPEUTIC OR COSMETIC PROCEDURES. NOT FOR HUMAN OR ANIMAL CONSUMPTION.

For Reference Only