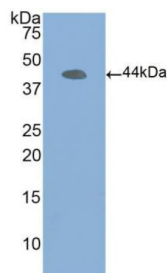
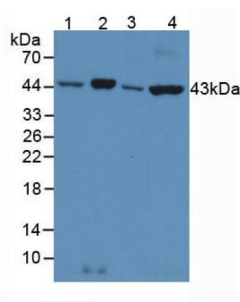


Beta Actin (ACTB) Antibody

Catalogue No.: abx132249



WB analysis of recombinant Human ACTb, using ACTb antibody.



WB analysis of (1) Human Liver Tissue, (2) Human Lung Tissue, (3) Human K562 Cells, and (4) Mouse Lung Tissue, using ACTb antibody (3 µg/ml) and HRP-conjugated Guinea pig Anti-Rabbit antibody ([abx400003](#), 1:2000 dilution).

Actin Beta (ACTb) Antibody is a Rabbit Polyclonal against Actin Beta (ACTb). This product is intended for use as a loading control in Western Blotting.

Target: Beta Actin (ACTB)

Clonality: Polyclonal

Reactivity: Human, Mouse, Rat, Cow, Chicken, Horse, Pig, Dog, Sheep, Guinea pig

Tested Applications: WB

Host: Rabbit

Recommended dilutions: WB: 0.5-5 µg/ml. Optimal dilutions/concentrations should be determined by the end user.

Conjugation: Unconjugated

Form: Liquid

Purification: Purified by antigen-specific affinity chromatography, followed by Protein A affinity chromatography.

Storage: Aliquot and store at -20°C. Avoid repeated freeze/thaw cycles.

Datasheet

Version: 2.0.0

Revision date: 13 Jul 2025



Buffer: 0.01 M PBS, pH 7.4, containing 0.05% Proclin-300, 50% glycerol.

Note: THIS PRODUCT IS FOR RESEARCH USE ONLY. NOT FOR USE IN DIAGNOSTIC, THERAPEUTIC OR COSMETIC PROCEDURES. NOT FOR HUMAN OR ANIMAL CONSUMPTION.

For Reference Only