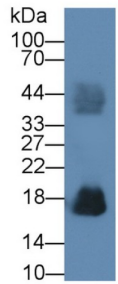


Datasheet

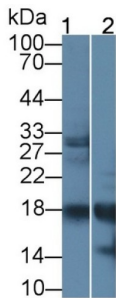
Version: 4.0.0
Revision date: 18 Mar 2025

Ribonuclease A2 (RNASE2) Antibody

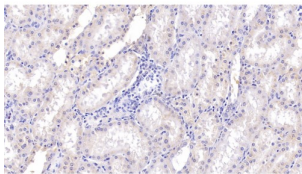
Catalogue No.: abx132158



Western blot analysis of Human Urine, using Rabbit Anti-Human RNASE2 Antibody (1 µg/ml) and HRP-conjugated Goat Anti-Rabbit antibody ([abx400043](#), 0.2 µg/ml).



Western blot analysis of (1) Human Urine, and (2) Mouse Spleen Lysate, using Rabbit Anti-Human RNASE2 Antibody (1 µg/ml) and HRP-conjugated Goat Anti-Rabbit antibody ([abx400043](#), 0.2 µg/ml).



IHC-P analysis of Human Kidney Tissue, with DAB staining, using Rabbit Anti-Human RNASE2 Antibody (10 µg/ml) and HRP-conjugated Goat Anti-Rabbit antibody ([abx400043](#), 2 µg/ml).

Ribonuclease A2 (RNASE2) Antibody is a Rabbit Polyclonal against Ribonuclease A2 (RNASE2).

Target: Ribonuclease A2 (RNASE2)

Clonality: Polyclonal

Reactivity: Human

Tested Applications: WB, IHC

Host: Rabbit

Recommended dilutions: WB: 0.01-2 µg/ml, IHC: 5-20 µg/ml. Optimal dilutions/concentrations should be determined by the end user.

Conjugation: Unconjugated

Datasheet

Version: 4.0.0
Revision date: 18 Mar 2025



Immunogen:	abx651009 - Recombinant RNASE2 (Lys28-Ile161) expressed in E. coli
Form:	Liquid
Purification:	Purified by antigen-specific affinity chromatography, followed by Protein A affinity chromatography.
Storage:	Aliquot and store at -20°C. Avoid repeated freeze/thaw cycles.
UniProt Primary AC:	P10153 (UniProt , ExPASy)
Gene Symbol:	RNASE2
GeneID:	6036
KEGG:	hsa:6036
String:	9606.ENSP00000303276
Buffer:	0.01 M PBS, pH 7.4, containing 0.05% Proclin-300, 50% glycerol.
Specificity:	Cross-reacts with Mouse RNASE2.
Concentration:	1 mg/ml
Note:	THIS PRODUCT IS FOR RESEARCH USE ONLY. NOT FOR USE IN DIAGNOSTIC, THERAPEUTIC OR COSMETIC PROCEDURES. NOT FOR HUMAN OR ANIMAL CONSUMPTION.

For Reference Only