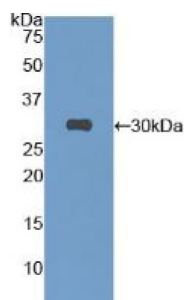


S15 Oligopeptide (S Tag) Antibody

Catalogue No.: abx132271



Western blot analysis of recombinant Protein with S-tag.

This product is currently in development. The lead time for this product may be several months. Please contact us at info@abbexa.com for an updated lead time before purchasing this product.

S15 Oligopeptide (S) Tag Antibody is a Rabbit Polyclonal against S15 Oligopeptide (S) Tag.

Target:	S15 Oligopeptide (S Tag)
Clonality:	Polyclonal
Reactivity:	General
Tested Applications:	WB, DB
Host:	Rabbit
Recommended dilutions:	WB: 0.01-2 µg/ml. Optimal dilutions/concentrations should be determined by the end user.
Conjugation:	Unconjugated
Immunogen:	OVA Conjugated S15 Oligopeptide (S)
Form:	Liquid
Purification:	Purified by antigen-specific affinity chromatography, followed by Protein A affinity chromatography.
Storage:	Aliquot and store at -20°C. Avoid repeated freeze/thaw cycles.
Buffer:	0.01 M PBS, pH 7.4, containing 0.05% Proclin-300, 50% glycerol.
Note:	THIS PRODUCT IS FOR RESEARCH USE ONLY. NOT FOR USE IN DIAGNOSTIC, THERAPEUTIC OR COSMETIC PROCEDURES. NOT FOR HUMAN OR ANIMAL CONSUMPTION.