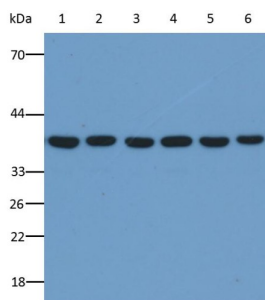
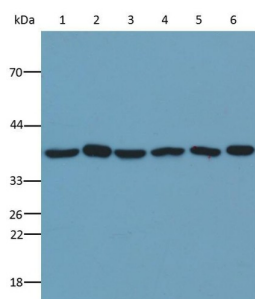


## Glyceraldehyde-3-Phosphate Dehydrogenase (GAPDH) Antibody

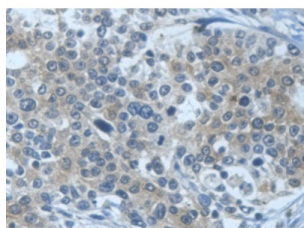
Catalogue No.: abx132230



Western blot analysis of (1) DU145, (2) OS-RC-2, (3) T-47D, (4) HEC-1B, (5) HepG2 and (6) HEK-293 whole cell lysates (20 µg/lane), using Mouse anti-GAPDH antibody (0.1 ng/ml) and and HRP-conjugated Rabbit Anti-Mouse antibody ([abx400002](#), 1/10,000 dilution). Developed using ECL. Calculated MW: 36 kDa, Observed MW: 36 kDa. Exposure time: 1 min.



Western blot analysis of (1) Rat heart, (2) Pig brain, (3) Cow kidney, (4) Guinea pig liver, (5) Rabbit pancreas, and (6) Goat spleen tissues, using Mouse anti-GAPDH antibody (0.3 ng/ml) and and HRP-conjugated Rabbit Anti-Mouse antibody ([abx400002](#), 1/10,000 dilution). Developed using ECL. Calculated MW: 36 kDa, Observed MW: 36 kDa. Exposure time: 1 min.



IHC-P analysis of Human Prostate cancer Tissue, with DAB staining.

Glyceraldehyde-3-Phosphate Dehydrogenase (GAPDH) Antibody is a Mouse Monoclonal loading control antibody against Glyceraldehyde-3-Phosphate Dehydrogenase (GAPDH).

<b>Target:</b>	Glyceraldehyde-3-Phosphate Dehydrogenase (GAPDH)
<b>Clonality:</b>	Monoclonal
<b>Clone:</b>	S361
<b>Reactivity:</b>	Human, Mouse, Rat, Guinea pig, Rabbit, Pig, Cow, Goat, Sheep, Chicken, Horse
<b>Tested Applications:</b>	WB
<b>Host:</b>	Mouse

# Datasheet

Version: 6.0.0  
Revision date: 06 Sep 2025



**Recommended dilutions:** WB: 0.1-100 ng/ml (1/10,000 - 1/10,000,000). Optimal dilutions/concentrations should be determined by the end user.

**Conjugation:** Unconjugated

**Immunogen:** [abx066862](#) - Recombinant GAPDH (Gly2-Ser148) expressed in E. coli.

**Isotype:** IgG<sub>1</sub> Kappa

**Form:** Liquid

**Purification:** Purified by Protein A and Protein G affinity chromatography.

**Storage:** Aliquot and store at -20°C. Avoid repeated freeze/thaw cycles.

**UniProt Primary AC:** P04406 ([UniProt](#), [ExPASy](#))

**KEGG:** hsa:2597

**String:** [9606.ENSP00000229239](#)

**Buffer:** 0.01 M PBS, pH 7.4, containing 0.05% Proclin-300, 50% glycerol.

**Concentration:** 1 mg/ml

**Note:** THIS PRODUCT IS FOR RESEARCH USE ONLY. NOT FOR USE IN DIAGNOSTIC, THERAPEUTIC OR COSMETIC PROCEDURES. NOT FOR HUMAN OR ANIMAL CONSUMPTION.