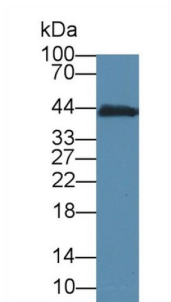
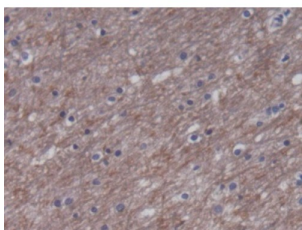


Creatine Kinase, Muscle (CKM) Antibody

Catalogue No.: abx132328



Western blot analysis of Mouse Small intestine lysate, Primary Ab: 5 µg/ml Mouse Anti-Mouse CKM Antibody Second Ab: 0.2 µg/ml HRP-Linked Caprine Anti-Mouse IgG Polyclonal Antibody.



IHC-P analysis of Human Cerebrum Tissue, with DAB staining.

Creatine Kinase, Muscle (CKM) Antibody is a Mouse Monoclonal against Creatine Kinase, Muscle (CKM).

Target: Creatine Kinase, Muscle (CKM)

Clonality: Monoclonal

Reactivity: Mouse

Tested Applications: WB, IHC, IF/ICC

Host: Mouse

Recommended dilutions: WB: 0.01-2 µg/ml, IHC: 5-20 µg/ml, IF/ICC: 5-20 µg/ml. Optimal dilutions/concentrations should be determined by the end user.

Conjugation: Unconjugated

Form: Liquid

Purification: Purified by Protein A and Protein G affinity chromatography.

Storage: Aliquot and store at -20°C. Avoid repeated freeze/thaw cycles.

UniProt Primary AC: P07310 ([UniProt](#), [ExPASy](#))

Datasheet

Version: 4.0.0

Revision date: 13 Aug 2025



KEGG: mmu:12715

String: [10090.ENSMUSP00000003643](#)

Buffer: 0.01 M PBS, pH 7.4, containing 0.05% Proclin-300, 50% glycerol.

Note: THIS PRODUCT IS FOR RESEARCH USE ONLY. NOT FOR USE IN DIAGNOSTIC, THERAPEUTIC OR COSMETIC PROCEDURES. NOT FOR HUMAN OR ANIMAL CONSUMPTION.

For Reference Only