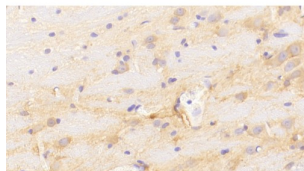


Growth-Regulated Alpha Protein / GROA (CXCL1) Antibody

Catalogue No.: abx132338



IHC-P analysis of Rat stomach Tissue, with DAB staining.

Growth-Regulated Alpha Protein / GROA (CXCL1) Antibody is a Mouse Monoclonal against Growth-Regulated Alpha Protein / GROA (CXCL1).

| | |
|-------------------------------|---|
| Target: | Growth-Regulated Alpha Protein / GROA (CXCL1) |
| Research Area: | Tumor Immunity, Infection immunity |
| Clonality: | Monoclonal |
| Reactivity: | Rat |
| Tested Applications: | IHC, IF/ICC |
| Host: | Mouse |
| Recommended dilutions: | IHC: 5-30 µg/ml, IF/ICC: 5-30 µg/ml. Optimal dilutions/concentrations should be determined by the end user. |
| Conjugation: | Unconjugated |
| Isotype: | IgG _{2b} Kappa |
| Form: | Liquid |
| Purification: | Purified by Protein A and Protein G affinity chromatography. |
| Storage: | Aliquot and store at -20°C. Avoid repeated freeze/thaw cycles. |
| UniProt Primary AC: | P14095 (UniProt , ExPASy) |
| KEGG: | rno:81503 |

Datasheet

Version: 3.0.0

Revision date: 22 Aug 2025



String: [10116.ENSRNOP00000003778](#)

Buffer: 0.01 M PBS, pH 7.4, containing 0.05% Proclin-300, 50% glycerol.

Note: THIS PRODUCT IS FOR RESEARCH USE ONLY. NOT FOR USE IN DIAGNOSTIC, THERAPEUTIC OR COSMETIC PROCEDURES. NOT FOR HUMAN OR ANIMAL CONSUMPTION.

For Reference Only