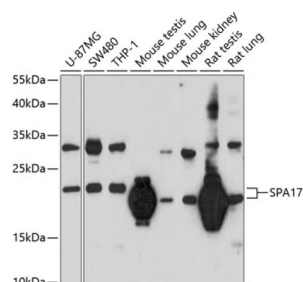


## Sperm Surface Protein Sp17 (SPA17) Antibody

Catalogue No.: abx003606



Western blot analysis of extracts of various cell lines using SPA17 Antibody (1/1000 dilution).

SPA17 Antibody is a Rabbit Polyclonal antibody against SPA17. This gene encodes a protein present at the cell surface. The N-terminus has sequence similarity to human cAMP-dependent protein kinase A (PKA) type II alpha regulatory subunit (RIIa) while the C-terminus has an IQ calmodulin-binding motif. The central portion of the protein has carbohydrate binding motifs and likely functions in cell-cell adhesion. The protein was initially characterized by its involvement in the binding of sperm to the zona pellucida of the oocyte. Recent studies indicate that it is also involved in additional cell-cell adhesion functions such as immune cell migration and metastasis. A retrotransposed pseudogene is present on chromosome 10q22.

**Target:** Sperm Surface Protein Sp17 (SPA17)

**Clonality:** Polyclonal

**Reactivity:** Human, Mouse, Rat

**Tested Applications:** WB

**Host:** Rabbit

**Recommended dilutions:** WB: 1/500 - 1/2000. Optimal dilutions/concentrations should be determined by the end user.

**Conjugation:** Unconjugated

**Immunogen:** Recombinant fusion protein corresponding to human SPA17

**Isotype:** IgG

**Form:** Liquid

**Purification:** Purified by affinity chromatography.

**Storage:** Aliquot and store at -20°C. Avoid repeated freeze/thaw cycles.

**UniProt Primary AC:** Q15506 ([UniProt](#), [ExPASy](#))

# Datasheet

Version: 4.0.0

Revision date: 15 Sep 2025



**Gene Symbol:** SPA17

**GeneID:** [53340](#)

**NCBI Accession:** NP\_059121.1

**KEGG:** hsa:53340

**String:** [9606.ENSP00000432305](#)

**Molecular Weight:** Calculated MW: 17 kDa  
Observed MW: 17 kDa

**Buffer:** PBS, pH 7.3, containing 0.02% sodium azide, 50% glycerol.

**Concentration:** 1 mg/ml

**Note:** THIS PRODUCT IS FOR RESEARCH USE ONLY. NOT FOR USE IN DIAGNOSTIC, THERAPEUTIC OR COSMETIC PROCEDURES. NOT FOR HUMAN OR ANIMAL CONSUMPTION.

For Reference Only