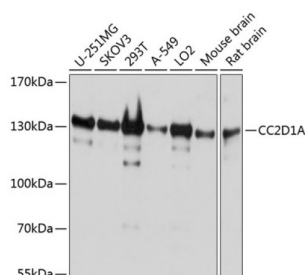
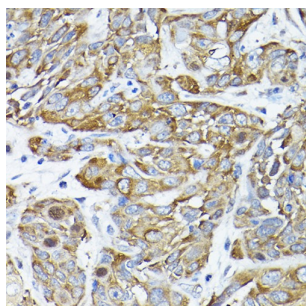


Coiled Coil And C2 Domain Containing 1A (CC2D1A) Antibody

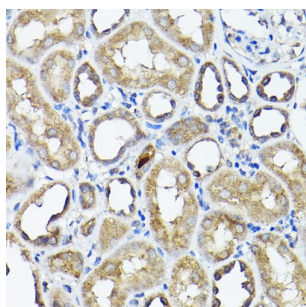
Catalogue No.: abx003634



Western blot analysis of various lysates using CC2D1A Antibody at 1/1000 dilution. Secondary antibody: HRP-conjugated Goat anti-Rabbit IgG (H+L) at 1/10000 dilution. Lysates/proteins: 25 µg per lane. Blocking buffer: 3% nonfat dry milk in TBST. Exposure time: 1s.



Immunohistochemistry analysis of paraffin-embedded Human esophageal cancer using CC2D1A Antibody at dilution of 1/200 (40x lens). High pressure antigen retrieval performed in 0.01 M Citrate buffer (pH 6.0) prior to IHC staining.



Immunohistochemistry analysis of paraffin-embedded Rat kidney using CC2D1A Antibody at dilution of 1/200 (40x lens). High pressure antigen retrieval performed in 0.01 M Citrate buffer (pH 6.0) prior to IHC staining.

CC2D1A Antibody is a Rabbit Polyclonal antibody against CC2D1A. This gene encodes a transcriptional repressor that binds to a conserved 14-bp 5'-repressor element and regulates expression of the 5-hydroxytryptamine (serotonin) receptor 1A gene in neuronal cells. The DNA binding and transcriptional repressor activities of the protein are inhibited by calcium. A mutation in this gene results in nonsyndromic mental retardation-3.

Target: Coiled Coil And C2 Domain Containing 1A (CC2D1A)

Clonality: Polyclonal

Reactivity: Human, Mouse, Rat

Tested Applications: ELISA, WB, IHC

Host: Rabbit

Recommended dilutions: ELISA: 1 µg/ml, WB: 1/1000 - 1/2000, IHC-P: 1/50 - 1/200. Not tested in IHC-F. Optimal dilutions/concentrations should be determined by the end user.

Datasheet

Version: 3.0.0
Revision date: 22 Jun 2025



Conjugation:	Unconjugated
Immunogen:	Recombinant fusion protein containing a sequence corresponding to amino acids 1-150 of human CC2D1A.
Isotype:	IgG
Form:	Liquid
Purification:	Purified by affinity chromatography.
Storage:	Aliquot and store at -20°C. Avoid repeated freeze/thaw cycles.
UniProt Primary AC:	Q6P1N0 (UniProt , ExPASy)
Gene Symbol:	CC2D1A
GeneID:	54862
NCBI Accession:	NP_060191.3
KEGG:	hsa:54862
String:	9606.ENSP00000313601
Molecular Weight:	Calculated MW: 104 kDa Observed MW: 131 kDa
Buffer:	PBS, pH 7.3, containing 0.01% thimerosal, 50% glycerol.
Concentration:	> 0.2 mg/ml
Note:	THIS PRODUCT IS FOR RESEARCH USE ONLY. NOT FOR USE IN DIAGNOSTIC, THERAPEUTIC OR COSMETIC PROCEDURES. NOT FOR HUMAN OR ANIMAL CONSUMPTION.