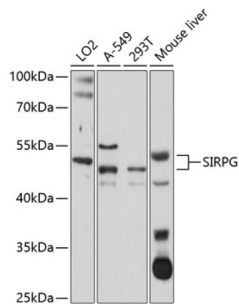


Signal Regulatory Protein Gamma (SIRPG) Antibody

Catalogue No.: abx003661



Western blot analysis of extracts of various cell lines using SIRPG Antibody (1/1000 dilution).

SIRPG Antibody is a Rabbit Polyclonal antibody against SIRPG. The protein encoded by this gene is a member of the signal-regulatory protein (SIRP) family, and also belongs to the immunoglobulin superfamily. SIRP family members are receptor-type transmembrane glycoproteins known to be involved in the negative regulation of receptor tyrosine kinase-coupled signaling processes. Alternatively spliced transcript variants encoding different isoforms have been described.

Target:	Signal Regulatory Protein Gamma (SIRPG)
Clonality:	Polyclonal
Reactivity:	Human, Mouse
Tested Applications:	WB
Host:	Rabbit
Recommended dilutions:	WB: 1/200 - 1/2000. Optimal dilutions/concentrations should be determined by the end user.
Conjugation:	Unconjugated
Immunogen:	Recombinant fusion protein corresponding to human SIRPG
Isotype:	IgG
Form:	Liquid
Purification:	Purified by affinity chromatography.
Storage:	Aliquot and store at -20°C. Avoid repeated freeze/thaw cycles.
UniProt Primary AC:	Q9P1W8 (UniProt , ExPASy)
Gene Symbol:	SIRPG

Datasheet

Version: 4.0.0

Revision date: 13 Aug 2025



GeneID: [55423](#)

NCBI Accession: NP_543006.2

String: [9606.ENSP00000305529](#)

Molecular Weight: Calculated MW: 18 kDa/29 kDa/38 kDa/42 kDa
Observed MW: 45-50 kDa

Buffer: PBS, pH 7.3, containing 0.02% sodium azide, 50% glycerol.

Concentration: 1 mg/ml

Note: THIS PRODUCT IS FOR RESEARCH USE ONLY. NOT FOR USE IN DIAGNOSTIC, THERAPEUTIC OR COSMETIC PROCEDURES. NOT FOR HUMAN OR ANIMAL CONSUMPTION.

For Reference Only