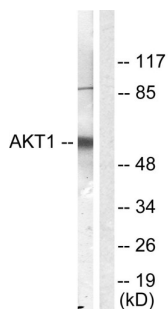
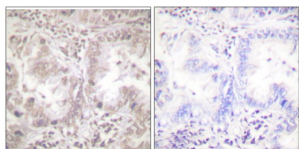


## RAC-Alpha Serine/threonine-Protein Kinase (Akt) Antibody

Catalogue No.: abx249426



Western blot analysis of NIH/3T3 cells treated with serum (10%, 30 min), using Akt antibody. The lane on the right is blocked with the synthesised peptide.



IHC analysis of paraffin-embedded human lung carcinoma tissue, using Akt antibody. The picture on the right is blocked with the synthesised peptide.

Akt (Ab-450) Antibody is a Rabbit Polyclonal against Akt.

**Target:** RAC-Alpha Serine/threonine-Protein Kinase (Akt)

**Clonality:** Polyclonal

**Reactivity:** Human, Mouse, Rat

**Tested Applications:** ELISA, WB, IHC

**Host:** Rabbit

**Recommended dilutions:** WB: 1/500 - 1/3000, IHC: 1/50 - 1/100, ELISA: 1/10000. Optimal dilutions/concentrations should be determined by the end user.

**Conjugation:** Unconjugated

**Immunogen:** The antiserum was produced against synthesised non-phosphopeptide derived from human Akt around the threonine 450 phosphorylation site.

**Epitope Region:** C-terminal

**Isotype:** IgG

**Form:** Liquid

# Datasheet

Version: 1.0.0  
Revision date: 29 Sep 2025



<b>Purification:</b>	Purified from rabbit antiserum by affinity chromatography using epitope-specific immunogen.
<b>Storage:</b>	Aliquot and store at -20°C. Avoid repeated freeze/thaw cycles.
<b>UniProt Primary AC:</b>	P31749 ( <a href="#">UniProt</a> , <a href="#">ExPASy</a> )
<b>KEGG:</b>	hsa:207
<b>String:</b>	<a href="#">9606.ENSP00000451828</a>
<b>Sequence:</b>	CAQMITITPPDQDD
<b>Buffer:</b>	PBS (without Mg <sup>2+</sup> and Ca <sup>2+</sup> ), pH 7.4, 150 mM NaCl, 0.02% sodium azide, 50% glycerol.
<b>Specificity:</b>	Detects endogenous levels of total Akt protein.
<b>Concentration:</b>	1 mg/ml
<b>Note:</b>	THIS PRODUCT IS FOR RESEARCH USE ONLY. NOT FOR USE IN DIAGNOSTIC, THERAPEUTIC OR COSMETIC PROCEDURES. NOT FOR HUMAN OR ANIMAL CONSUMPTION.