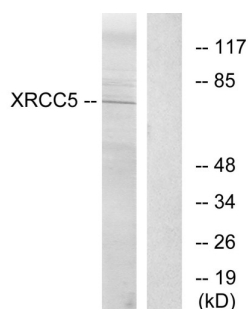


X-Ray Repair Cross Complementing 5 (XRCC5) Antibody

Catalogue No.: abx249444



WB analysis of extracts from COS-7 cells, using XRCC5 antibody. The lane on the right is treated with synthetic peptide.

XRCC5 Antibody is a Rabbit Polyclonal against XRCC5.

Target:	X-Ray Repair Cross Complementing 5 (XRCC5)
Clonality:	Polyclonal
Reactivity:	Human
Tested Applications:	ELISA, WB
Host:	Rabbit
Recommended dilutions:	ELISA: 1/40000, WB: 1/500 - 1/3000. Optimal dilutions/concentrations should be determined by the end user.
Conjugation:	Unconjugated
Immunogen:	The antiserum was produced against synthesized peptide derived from internal region of human XRCC5.
Epitope Region:	Internal
Isotype:	IgG
Form:	Liquid
Purification:	Purified from rabbit antiserum by affinity chromatography using epitope-specific immunogen.
Storage:	Aliquot and store at -20°C. Avoid repeated freeze/thaw cycles.
UniProt Primary AC:	P13010 (UniProt , ExPASy)
KEGG:	hsa:7520

Datasheet

Version: 3.0.0

Revision date: 29 Aug 2025



String: [9606.ENSPO0000375978](#)

Buffer: PBS (without Mg^{2+} and Ca^{2+}), pH 7.4, 150 mM NaCl, 0.02% sodium azide, 50% glycerol.

Specificity: Detects endogenous levels of total XRCC5 protein.

Concentration: 1 mg/ml

Note: THIS PRODUCT IS FOR RESEARCH USE ONLY. NOT FOR USE IN DIAGNOSTIC, THERAPEUTIC OR COSMETIC PROCEDURES. NOT FOR HUMAN OR ANIMAL CONSUMPTION.

For Reference Only