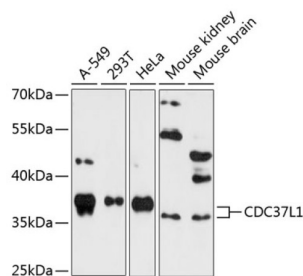


Cell Division Cycle 37 Like 1 (CDC37L1) Antibody

Catalogue No.: abx003666



Western blot analysis of extracts of various cell lines using CDC37L1 Antibody (1/3000 dilution).

CDC37L1 Antibody is a Rabbit Polyclonal antibody against CDC37L1. CDC37L1 is a cytoplasmic phosphoprotein that exists in complex with HSP90 (HSPCA; MIM 140571) as well as several other proteins involved in HSP90-mediated protein folding (Scholz et al., 2001).

Target: Cell Division Cycle 37 Like 1 (CDC37L1)

Clonality: Polyclonal

Reactivity: Human, Mouse

Tested Applications: WB

Host: Rabbit

Recommended dilutions: WB: 1/500 - 1/2000. Optimal dilutions/concentrations should be determined by the end user.

Conjugation: Unconjugated

Immunogen: Recombinant fusion protein corresponding to human CDC37L1

Isotype: IgG

Form: Liquid

Purification: Purified by affinity chromatography.

Storage: Aliquot and store at -20°C. Avoid repeated freeze/thaw cycles.

UniProt Primary AC: Q7L3B6 ([UniProt](#), [ExPASy](#))

Gene Symbol: CDC37L1

Datasheet

Version: 3.0.0

Revision date: 14 Jul 2025



GeneID: [55664](#)

NCBI Accession: NP_060383.2

KEGG: hsa:55664

String: [9606.ENSP00000371278](#)

Molecular Weight: Calculated MW: 38 kDa
Observed MW: 39 kDa

Buffer: PBS, pH 7.3, containing 0.01% thiomersal, 50% glycerol.

Concentration: 1 mg/ml

Note: THIS PRODUCT IS FOR RESEARCH USE ONLY. NOT FOR USE IN DIAGNOSTIC, THERAPEUTIC OR COSMETIC PROCEDURES. NOT FOR HUMAN OR ANIMAL CONSUMPTION.

For Reference Only