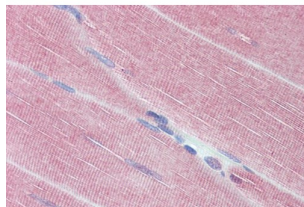
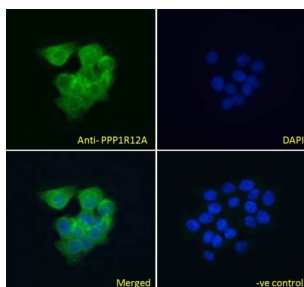


Protein Phosphatase 1 Regulatory Subunit 12A (PPP1R12A) Antibody

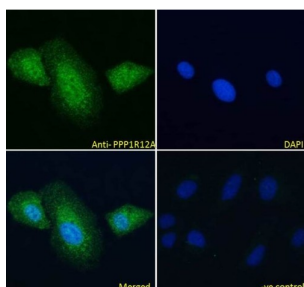
Catalogue No.: abx433492



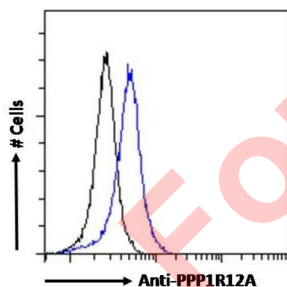
abx433492 (3.75 µg/ml) staining of paraffin embedded Human Skeletal Muscle. Steamed antigen retrieval with citrate buffer pH 6, AP-staining.



abx433492 Immunofluorescence analysis of paraformaldehyde fixed A431 cells, permeabilized with 0.15% Triton. Primary incubation 1hr (10 µg/ml) followed by AF488 secondary antibody (4 µg/ml), showing cytoplasmic staining. The nuclear stain is DAPI (blue). Negative control: Unimmunized goat IgG (10 µg/ml) followed by AF488 secondary antibody (4 µg/ml).



abx433492 Immunofluorescence analysis of paraformaldehyde fixed U2OS cells, permeabilized with 0.15% Triton. Primary incubation 1hr (10 µg/ml) followed by AF488 secondary antibody (4 µg/ml), showing cytoplasmic and some nuclear staining. The nuclear stain is DAPI (blue). Negative control: Unimmunized goat IgG (10 µg/ml) followed by AF488 secondary antibody (4 µg/ml).



Flow cytometry analysis of paraformaldehyde fixed HEK293 cells (blue line), permeabilized with 0.5% Triton. Primary incubation 1hr (10 µg/ml) followed by AF488 secondary antibody (0.4 µg/ml). IgG control: Unimmunized goat IgG (black line) followed by AF488 secondary antibody.

Protein Phosphatase 1 Regulatory Subunit 12A (PPP1R12A) Antibody is an antibody against PPP1R12A.

Target: Protein Phosphatase 1 Regulatory Subunit 12A (PPP1R12A)

Clonality: Polyclonal

Reactivity: Human

Datasheet

Version: 4.0.0
Revision date: 03 Aug 2025



Tested Applications: P-ELISA, IHC, IF/ICC, FCM

Host: Goat

Recommended dilutions: P-ELISA: 1/16000. Optimal dilutions/concentrations should be determined by the end user.

Conjugation: Unconjugated

Immunogen: [abx615561](#) - C-Terminus: C-REDEYKQKYSRTYD

Isotype: IgG

Form: Liquid

Purification: Purified from goat serum by ammonium sulphate precipitation followed by antigen affinity chromatography using the immunizing peptide.

Storage: Aliquot and store at -20°C. Avoid repeated freeze/thaw cycles.

Gene Symbol: PPP1R12A

NCBI Accession: NP_002471.1, NP_001231919.1, NP_001231921.1, NP_001137358.1

Buffer: Tris saline, pH 7.3, containing 0.02% sodium azide and 0.5% bovine serum albumin.

Concentration: 0.5 mg/ml

Note: THIS PRODUCT IS FOR RESEARCH USE ONLY. NOT FOR USE IN DIAGNOSTIC, THERAPEUTIC OR COSMETIC PROCEDURES. NOT FOR HUMAN OR ANIMAL CONSUMPTION.