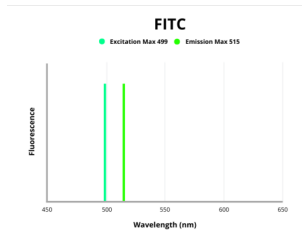


Leukocyte Immunoglobulin Like Receptor Subfamily B, Member 2 (LILRB2) Antibody (FITC)

Catalogue No.: abx270483



Fluorescence emission spectra of FITC.

Leukocyte Immunoglobulin Like Receptor Subfamily B, Member 2 (LILRB2) Antibody (FITC) is a Rabbit Polyclonal Antibody conjugated to FITC against Leukocyte Immunoglobulin Like Receptor Subfamily B, Member 2 (LILRB2) for use in flow cytometry.

Target:	Leukocyte Immunoglobulin Like Receptor Subfamily B, Member 2 (LILRB2)
Clonality:	Polyclonal
Reactivity:	Human
Tested Applications:	FCM
Host:	Rabbit
Recommended dilutions:	FCM: 1-5 μ l/10 ⁶ cells. Optimal dilutions/concentrations should be determined by the end user.
Conjugation:	FITC
Excitation/Emission:	499/515
Laser Line:	488
Isotype:	IgG
Form:	Liquid
Purification:	Purified by antigen-specific affinity chromatography.
Storage:	Aliquot and store at -20°C. Avoid exposure to light. Avoid repeated freeze/thaw cycles.

Datasheet

Version: 2.0.0

Revision date: 06 Jun 2025



Buffer: 0.01 M PBS, pH 7.4, containing 0.05% Proclin-300, 50% glycerol.

Note: THIS PRODUCT IS FOR RESEARCH USE ONLY. NOT FOR USE IN DIAGNOSTIC, THERAPEUTIC OR COSMETIC PROCEDURES. NOT FOR HUMAN OR ANIMAL CONSUMPTION.

For Reference Only