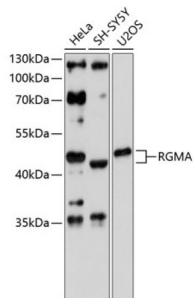


Repulsive Guidance Molecule A (RGMA) Antibody

Catalogue No.: abx003702



Western blot analysis of extracts of various cell lines using RGMA Antibody (1/3000 dilution).

RGMA Antibody is a Rabbit Polyclonal antibody against RGMA. This gene encodes a member of the repulsive guidance molecule family. The encoded protein is a glycosylphosphatidylinositol-anchored glycoprotein that functions as an axon guidance protein in the developing and adult central nervous system. This protein may also function as a tumor suppressor in some cancers. Alternate splicing results in multiple transcript variants.

Target: Repulsive Guidance Molecule A (RGMA)

Clonality: Polyclonal

Reactivity: Human

Tested Applications: WB

Host: Rabbit

Recommended dilutions: WB: 1/500 - 1/2000. Optimal dilutions/concentrations should be determined by the end user.

Conjugation: Unconjugated

Immunogen: Recombinant fusion protein corresponding to human RGMA

Isotype: IgG

Form: Liquid

Purification: Purified by affinity chromatography.

Storage: Aliquot and store at -20°C. Avoid repeated freeze/thaw cycles.

UniProt Primary AC: Q96B86 ([UniProt](#), [ExPASy](#))

Gene Symbol: RGMA

Datasheet

Version: 4.0.0

Revision date: 20 Aug 2025



GeneID: [56963](#)

NCBI Accession: NP_064596.2

KEGG: hsa:56963

String: [9606.ENSP00000452126](#)

Molecular Weight: Calculated MW: 47 kDa/49 kDa/50 kDa
Observed MW: 49 kDa

Buffer: PBS, pH 7.3, containing 0.01% thiomersal, 50% glycerol.

Concentration: 1 mg/ml

Note: THIS PRODUCT IS FOR RESEARCH USE ONLY. NOT FOR USE IN DIAGNOSTIC, THERAPEUTIC OR COSMETIC PROCEDURES. NOT FOR HUMAN OR ANIMAL CONSUMPTION.

For Reference Only