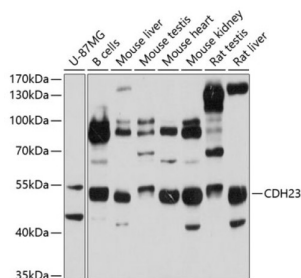


Cadherin Related 23 (CDH23) Antibody

Catalogue No.: abx003739



Western blot analysis of extracts of various cell lines using CDH23 Antibody (1/1000 dilution).

CDH23 Antibody is a Rabbit Polyclonal antibody against CDH23. This gene is a member of the cadherin superfamily, whose genes encode calcium dependent cell-cell adhesion glycoproteins. The encoded protein is thought to be involved in stereocilia organization and hair bundle formation. The gene is located in a region containing the human deafness loci DFNB12 and USH1D. Usher syndrome 1D and nonsyndromic autosomal recessive deafness DFNB12 are caused by allelic mutations of this cadherin-like gene. Upregulation of this gene may also be associated with breast cancer. Alternative splice variants encoding different isoforms have been described.

Target: Cadherin Related 23 (CDH23)

Clonality: Polyclonal

Reactivity: Human, Mouse, Rat

Tested Applications: WB

Host: Rabbit

Recommended dilutions: WB: 1/200 - 1/1000. Optimal dilutions/concentrations should be determined by the end user.

Conjugation: Unconjugated

Immunogen: Recombinant fusion protein corresponding to human CDH23

Isotype: IgG

Form: Liquid

Purification: Purified by affinity chromatography.

Storage: Aliquot and store at -20°C. Avoid repeated freeze/thaw cycles.

UniProt Primary AC: Q9H251 ([UniProt](#), [ExPASy](#))

Datasheet

Version: 3.0.0
Revision date: 08 Oct 2025



Gene Symbol: CDH23

GeneID: [64072](#)

NCBI Accession: NP_001165402.1

String: [9606.ENSP00000381768](#)

Molecular Weight: Calculated MW: 23-27 kDa/58 kDa/119-133 kDa/365- 369 kDa
Observed MW: 52 kDa

Buffer: PBS, pH 7.3, containing 0.02% sodium azide, 50% glycerol.

Concentration: 1 mg/ml

Note: THIS PRODUCT IS FOR RESEARCH USE ONLY. NOT FOR USE IN DIAGNOSTIC, THERAPEUTIC OR COSMETIC PROCEDURES. NOT FOR HUMAN OR ANIMAL CONSUMPTION.

For Reference Only