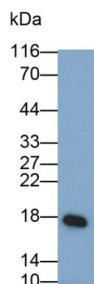


Interleukin 36 Gamma / IL1F9 (IL36G) Antibody

Catalogue No.: abx173034



Western blot analysis of A431 cell lysate, using Mouse Anti-Human IL1F9 Antibody (0.5 µg/ml) and HRP-conjugated Goat Anti-Mouse antibody ([abx400001](#), 0.2 µg/ml).

Interleukin 1 Family, Member 9 (IL1F9) Antibody is a Mouse Monoclonal antibody against Interleukin 1 Family, Member 9 (IL1F9).

Target:	Interleukin 36 Gamma / IL1F9 (IL36G)
Clonality:	Monoclonal
Reactivity:	Human
Tested Applications:	WB, IHC, IF/ICC
Host:	Mouse
Recommended dilutions:	WB: 0.01-2 µg/ml, IHC: 5-20 µg/ml, IF/ICC: 5-20 µg/ml. Optimal dilutions/concentrations should be determined by the end user.
Conjugation:	Unconjugated
Immunogen:	abx067397 - Recombinant Interleukin 1 Family, Member 9 (IL1F9)
Isotype:	IgG ₁ Kappa
Form:	Liquid
Purification:	Purified by Protein A and Protein G affinity chromatography.
Storage:	Aliquot and store at -20°C. Avoid repeated freeze/thaw cycles.
Buffer:	0.01 M PBS, pH 7.4, containing 0.05% Proclin-300, 50% glycerol.
Note:	THIS PRODUCT IS FOR RESEARCH USE ONLY. NOT FOR USE IN DIAGNOSTIC, THERAPEUTIC OR COSMETIC PROCEDURES. NOT FOR HUMAN OR ANIMAL CONSUMPTION.