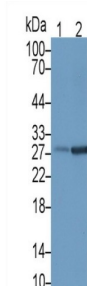


NKG2-D Type II Integral Membrane Protein (KLRK1) Antibody

Catalogue No.: abx173258



Western blot analysis of (1) Rat Pancrease lysate, and (2) Rat Spleen lysate, using KLRK1 antibody.

Killer Cell Lectin Like Receptor Subfamily K, Member 1 (KLRK1) Antibody is a Mouse Monoclonal antibody against Killer Cell Lectin Like Receptor Subfamily K, Member 1 (KLRK1).

Target:	NKG2-D Type II Integral Membrane Protein (KLRK1)
Clonality:	Monoclonal
Reactivity:	Human
Tested Applications:	WB, IHC, IF/ICC
Host:	Mouse
Recommended dilutions:	WB: 0.01-2 µg/ml, IHC: 5-20 µg/ml, IF/ICC: 5-20 µg/ml. Optimal dilutions/concentrations should be determined by the end user.
Conjugation:	Unconjugated
Immunogen:	abx168745 - Recombinant KLRK1 (Thr92-Val216) expressed in E. coli
Isotype:	IgG ₁ Kappa
Form:	Liquid
Purification:	Purified by Protein A and Protein G affinity chromatography.
Storage:	Aliquot and store at -20°C. Avoid repeated freeze/thaw cycles.
Buffer:	0.01 M PBS, pH 7.4, containing 0.05% Proclin-300, 50% glycerol.
Note:	THIS PRODUCT IS FOR RESEARCH USE ONLY. NOT FOR USE IN DIAGNOSTIC, THERAPEUTIC OR COSMETIC PROCEDURES. NOT FOR HUMAN OR ANIMAL CONSUMPTION.