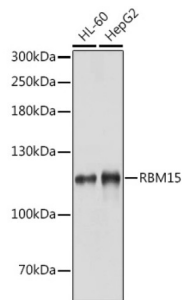


RNA Binding Motif Protein 15 (RBM15) Antibody

Catalogue No.: abx003755



Western blot analysis of extracts of various cell lines using RBM15 Antibody (1/1000 dilution).

RBM15 Antibody is a Rabbit Polyclonal antibody against RBM15. Members of the SPEN (Split-end) family of proteins, including RBM15, have repressor function in several signaling pathways and may bind to RNA through interaction with spliceosome components (Hiriart et al., 2005).

Target: RNA Binding Motif Protein 15 (RBM15)

Clonality: Polyclonal

Reactivity: Human, Mouse

Tested Applications: WB

Host: Rabbit

Recommended dilutions: WB: 1/500 - 1/2000. Optimal dilutions/concentrations should be determined by the end user.

Conjugation: Unconjugated

Immunogen: Recombinant fusion protein corresponding to human RBM15

Isotype: IgG

Form: Liquid

Purification: Purified by affinity chromatography.

Storage: Aliquot and store at -20°C. Avoid repeated freeze/thaw cycles.

UniProt Primary AC: Q96T37 ([UniProt](#), [ExPASy](#))

Gene Symbol: RBM15

Datasheet

Version: 4.0.0

Revision date: 06 Mar 2025



GeneID: [64783](#)

NCBI Accession: NP_001188474.1

KEGG: hsa:64783

String: [9606.ENSP00000358799](#)

Molecular Weight: Calculated MW: 99 kDa/104 kDa/106 kDa/107 kDa
Observed MW: 120 kDa

Buffer: PBS, pH 7.3, containing 0.02% sodium azide, 50% glycerol.

Concentration: 1 mg/ml

Note: THIS PRODUCT IS FOR RESEARCH USE ONLY. NOT FOR USE IN DIAGNOSTIC, THERAPEUTIC OR COSMETIC PROCEDURES. NOT FOR HUMAN OR ANIMAL CONSUMPTION.

For Reference Only