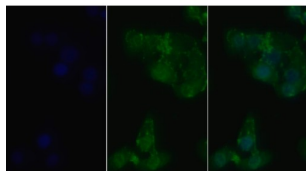


## Receptor Interacting Serine Threonine Kinase 1 (RIPK1) Antibody

Catalogue No.: abx174346



IF analysis of Human HeLa cells, using Mouse Anti-Human RIPK1 Antibody (20 µg/ml) and FITC-conjugated Goat Anti-Mouse antibody ([abx400031](#), 4 µg/ml).

Receptor Interacting Serine Threonine Kinase 1 (RIPK1) Antibody is a Mouse Monoclonal antibody against Receptor Interacting Serine Threonine Kinase 1 (RIPK1).

<b>Target:</b>	Receptor Interacting Serine Threonine Kinase 1 (RIPK1)
<b>Clonality:</b>	Monoclonal
<b>Reactivity:</b>	Human
<b>Tested Applications:</b>	WB, IHC, IF/ICC
<b>Host:</b>	Mouse
<b>Recommended dilutions:</b>	WB: 0.01-2 µg/ml, IHC: 5-20 µg/ml, IF/ICC: 5-20 µg/ml. Optimal dilutions/concentrations should be determined by the end user.
<b>Conjugation:</b>	Unconjugated
<b>Immunogen:</b>	<a href="#">abx166527</a> - Recombinant Receptor Interacting Serine Threonine Kinase 1 (RIPK1)
<b>Isotype:</b>	IgG <sub>1</sub> Kappa
<b>Form:</b>	Liquid
<b>Purification:</b>	Purified by Protein A and Protein G affinity chromatography.
<b>Storage:</b>	Aliquot and store at -20°C. Avoid repeated freeze/thaw cycles.
<b>Buffer:</b>	0.01 M PBS, pH 7.4, containing 0.05% Proclin-300, 50% glycerol.
<b>Note:</b>	THIS PRODUCT IS FOR RESEARCH USE ONLY. NOT FOR USE IN DIAGNOSTIC, THERAPEUTIC OR COSMETIC PROCEDURES. NOT FOR HUMAN OR ANIMAL CONSUMPTION.