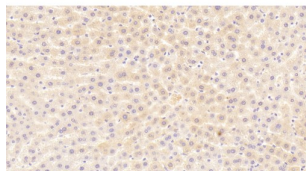


Cholinergic Receptor, Nicotinic, Alpha 1 (CHRNA1) Antibody

Catalogue No.: abx175854



IHC-P analysis of Rat Liver Tissue, with DAB staining, using Rabbit Anti-Rat CHRNA1 Antibody (20 µg/ml) and HRP-conjugated Goat Anti-Rabbit antibody ([abx400043](#), 2 µg/ml).

Cholinergic Receptor, Nicotinic, Alpha 1 (CHRNA1) Antibody is a Rabbit Polyclonal antibody against Cholinergic Receptor, Nicotinic, Alpha 1 (CHRNA1).

| | |
|-------------------------------|--|
| Target: | Cholinergic Receptor, Nicotinic, Alpha 1 (CHRNA1) |
| Clonality: | Polyclonal |
| Reactivity: | Rat |
| Tested Applications: | WB, IHC, IF/ICC |
| Host: | Rabbit |
| Recommended dilutions: | WB: 0.01-2 µg/ml, IHC: 5-20 µg/ml, IF/ICC: 5-20 µg/ml. Optimal dilutions/concentrations should be determined by the end user. |
| Conjugation: | Unconjugated |
| Immunogen: | abx652918 - Recombinant Cholinergic Receptor, Nicotinic, Alpha 1 (CHRNA1) |
| Form: | Liquid |
| Purification: | Purified by antigen-specific affinity chromatography, followed by Protein A affinity chromatography. |
| Storage: | Aliquot and store at -20°C. Avoid repeated freeze/thaw cycles. |
| Buffer: | 0.01 M PBS, pH 7.4, containing 0.05% Proclin-300, 50% glycerol. |
| Note: | THIS PRODUCT IS FOR RESEARCH USE ONLY. NOT FOR USE IN DIAGNOSTIC, THERAPEUTIC OR COSMETIC PROCEDURES. NOT FOR HUMAN OR ANIMAL CONSUMPTION. |