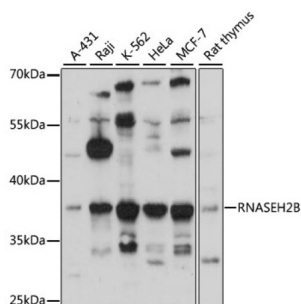
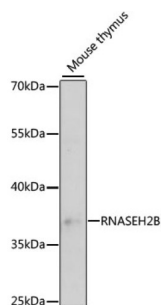


Ribonuclease H2 Subunit B (RNASEH2B) Antibody

Catalogue No.: abx003789



Western blot analysis of extracts of various cell lines using RNASEH2B Antibody (1/3000 dilution).



Western blot analysis of extracts of mouse thymus using RNASEH2B Antibody (1/3000 dilution).

RNASEH2B Antibody is a Rabbit Polyclonal antibody against RNASEH2B. RNase H2 is composed of a single catalytic subunit (A) and two non-catalytic subunits (B and C) and specifically degrades the RNA of RNA:DNA hybrids. The protein encoded by this gene is the non-catalytic B subunit of RNase H2, which is thought to play a role in DNA replication. Multiple transcript variants encoding different isoforms have been found for this gene. Defects in this gene are a cause of Aicardi-Goutieres syndrome type 2 (AGS2).

Target: Ribonuclease H2 Subunit B (RNASEH2B)

Clonality: Polyclonal

Reactivity: Human, Mouse, Rat

Tested Applications: WB

Host: Rabbit

Recommended dilutions: WB: 1/500 - 1/2000. Optimal dilutions/concentrations should be determined by the end user.

Conjugation: Unconjugated

Immunogen: Recombinant fusion protein corresponding to human RNASEH2B

Isotype: IgG

Datasheet

Version: 4.0.0
Revision date: 05 Mar 2025



Form:	Liquid
Purification:	Purified by affinity chromatography.
Storage:	Aliquot and store at -20°C. Avoid repeated freeze/thaw cycles.
UniProt Primary AC:	Q5TBB1 (UniProt , ExPASy)
Gene Symbol:	RNASEH2B
GeneID:	79621
NCBI Accession:	NP_078846.2
KEGG:	hsa:79621
String:	9606.ENSP00000337623
Molecular Weight:	Calculated MW: 29 kDa/35 kDa Observed MW: 37 kDa
Buffer:	PBS, pH 7.3, containing 0.01% thiomersal, 50% glycerol.
Concentration:	1 mg/ml
Note:	THIS PRODUCT IS FOR RESEARCH USE ONLY. NOT FOR USE IN DIAGNOSTIC, THERAPEUTIC OR COSMETIC PROCEDURES. NOT FOR HUMAN OR ANIMAL CONSUMPTION.