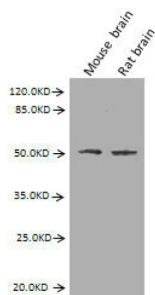


Glial Fibrillary Acidic Protein (GFAP) Antibody

Catalogue No.: abx159517



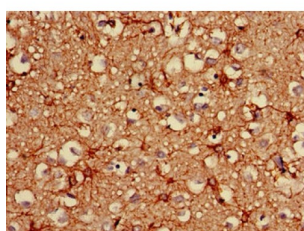
Western Blot

Positive WB detected in: Mouse brain tissue, Rat brain tissue

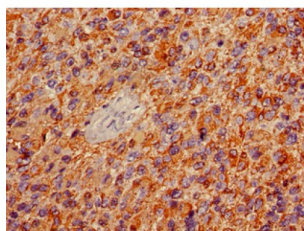
All lanes: GFAP antibody at 2.7 µg/ml

Predicted band size: 50,51 kDa

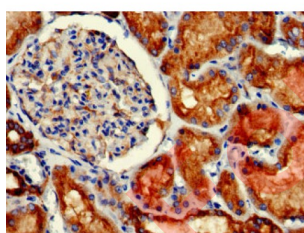
Observed band size: 50 kDa



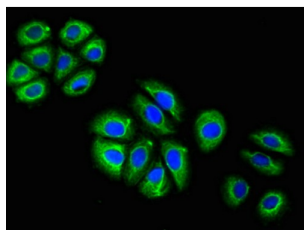
Immunohistochemistry of paraffin-embedded human brain tissue using GFAP Antibody at dilution of 1/100.



Immunohistochemistry of paraffin-embedded human glioma using GFAP Antibody at dilution of 1/100.



Immunohistochemistry of paraffin-embedded human kidney tissue using GFAP Antibody at dilution of 1/100.

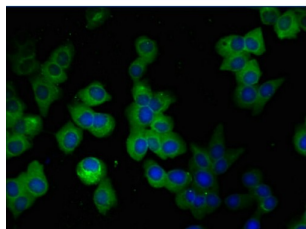


Immunofluorescent analysis of A549 cells using GFAP Antibody at a dilution of 1/100 and AF488-conjugated AffiniPure Goat Anti-Mouse IgG (H+L).

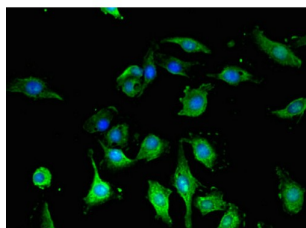
Datasheet

Version: 3.0.0

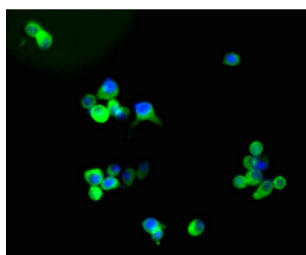
Revision date: 09 Jun 2025



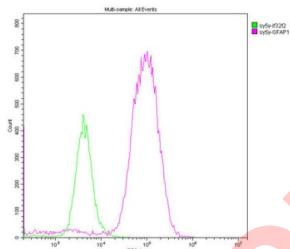
Immunofluorescent analysis of SY5Y cells using GFAP Antibody at a dilution of 1/100 and AF488-conjugated AffiniPure Goat Anti-Mouse IgG (H+L).



Immunofluorescent analysis of U251 cells using GFAP Antibody at a dilution of 1/100 and AF488-conjugated AffiniPure Goat Anti-Mouse IgG (H+L).



Immunofluorescent analysis of U87 cells using GFAP Antibody at a dilution of 1/100 and AF488-conjugated AffiniPure Goat Anti-Mouse IgG (H+L).



Overlay histogram showing SY5Y cells stained with GFAP Antibody (red line). The cells were fixed with 70% Ethylalcohol (18h) and then permeabilized with 0.3% Triton X-100 for 2 min. The cells were then incubated in 1x PBS /10% normal goat serum to block non-specific protein-protein interactions followed by the antibody (10 µg/1x10⁶ cells) for 1 h at 4°C. The secondary antibody used was FITC goat anti-mouse IgG (H+L) at 1/200 dilution for 1 h at 4°C. Isotype control antibody (green line) was mouse IgG2b (10 µg/1x10⁶ cells) used under the same conditions. Acquisition of >10,000 events was performed.

GFAP Antibody is a Mouse Monoclonal against GFAP.

Target: Glial Fibrillary Acidic Protein (GFAP)

Clonality: Monoclonal

Reactivity: Human, Mouse, Rat

Tested Applications: ELISA, WB, IHC, IF/ICC, FCM

Datasheet

Version: 3.0.0
Revision date: 09 Jun 2025



Host: Mouse

Recommended dilutions: WB: 1/500 - 1/5000, IHC: 1/50 - 1/500, IF/ICC: 1/50 - 1/200. Optimal dilutions/concentrations should be determined by the end user.

Conjugation: Unconjugated

Immunogen: Recombinant Human GFAP protein (292-432AA).

Isotype: IgG_{2b}

Form: Liquid

Purification: Purified by Protein G.

Storage: Aliquot and store at -20°C. Avoid repeated freeze/thaw cycles.

UniProt Primary AC: P14136 ([UniProt](#), [ExPASy](#))

KEGG: hsa:2670

String: [9606.ENSP00000468500](#)

Buffer: 0.01 M PBS, pH 7.4, 0.03% Proclin 300 and 50% glycerol.

Note: THIS PRODUCT IS FOR RESEARCH USE ONLY. NOT FOR USE IN DIAGNOSTIC, THERAPEUTIC OR COSMETIC PROCEDURES. NOT FOR HUMAN OR ANIMAL CONSUMPTION.