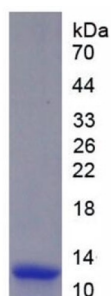
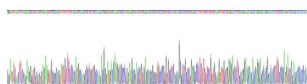


## Mouse Complement C4a anaphylatoxin (C4a) Protein

Catalogue No.: abx653024



SDS-PAGE analysis of recombinant Mouse Complement C4-A (C4A) Protein.



Gene sequencing extract of recombinant Mouse Complement C4-A (C4A) Protein.

Mouse Complement C4a anaphylatoxin (C4a) Protein is a Recombinant Mouse protein expressed in E. coli.

**Target:** Complement C4a anaphylatoxin (C4a)

**Origin:** Mouse

**Expression:** Recombinant

**Tested Applications:** WB, SDS-PAGE

**Host:** E. coli

**Conjugation:** Unconjugated

**Form:** Lyophilized

**Activity:** Not tested

**Purity:** > 90%

# Datasheet

Version: 1.0.0  
Revision date: 04 Oct 2025



<b>Reconstitution:</b>	To keep the original salt concentration, we recommend reconstituting to the original concentration prior to lyophilization (see Concentration) in ddH <sub>2</sub> O. If a lower concentration is required, dilute in PBS, pH 7.4. If a higher concentration is required, the product can be reconstituted directly in PBS, pH 7.4, though please note that this will change the overall salt concentration. The stock concentration should be between 0.1-1.0 mg/ml. Do not vortex.
<b>Storage:</b>	Store at 2-8°C for up to one month. For long-term storage, store at -80°C. Avoid repeated freeze/thaw cycles.
<b>Molecular Weight:</b>	Calculated MW: 9.8 kDa Observed MW: 12 kDa
<b>Sequence Fragment:</b>	Asn678-Arg753
<b>Sequence:</b>	NVN FQKAVSEKLG QYSSPDAKRC CQDGMTKLPM KRTCEQRAAR VPQQACREPF LSCCKFAEDL RRNQTRSQAHLAR
<b>Tag:</b>	N-terminal His tag
<b>Buffer:</b>	Prior to lyophilization: PBS, pH 7.4, containing 0.01% Sarcosyl, 1 mM DTT, 5% Trehalose and Proclin-300.
<b>Concentration:</b>	Prior to lyophilization: 200 µg/ml
<b>Note:</b>	THIS PRODUCT IS FOR RESEARCH USE ONLY. NOT FOR USE IN DIAGNOSTIC, THERAPEUTIC OR COSMETIC PROCEDURES. NOT FOR HUMAN OR ANIMAL CONSUMPTION.