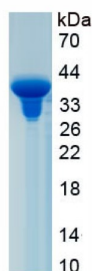


Human G Protein Coupled Estrogen Receptor 1 (GPER1) Protein

Catalogue No.: abx653485



SDS-PAGE analysis of recombinant Human GPER1 Protein.

Human G Protein Coupled Estrogen Receptor 1 (GPER1) Protein is a Recombinant Human protein expressed in E. coli.

Target:	G Protein Coupled Estrogen Receptor 1 (GPER1)
Origin:	Human
Expression:	Recombinant
Tested Applications:	WB, SDS-PAGE
Host:	E. coli
Conjugation:	Unconjugated
Form:	Lyophilized
Activity:	Not tested
Purity:	> 90%
Reconstitution:	To keep the original salt concentration, we recommend reconstituting to the original concentration prior to lyophilization (see Concentration) in ddH ₂ O. If a lower concentration is required, dilute in 10 mM PBS, pH 7.4. If a higher concentration is required, the product can be reconstituted directly in 10 mM PBS, pH 7.4, though please note that this will change the overall salt concentration. The stock concentration should be between 0.1-1.0 mg/ml. Do not vortex.
Storage:	Store at 2-8°C for up to one month. For long-term storage, store at -80°C. Avoid repeated freeze/thaw cycles.
UniProt Primary AC:	Q99527 (UniProt , ExPASy)
Gene Symbol:	GPER1

Datasheet

Version: 5.0.0
Revision date: 11 Oct 2025



GeneID:	2852
KEGG:	hsa:2852
Ensembl:	ENSG00000164850
String:	9606.ENSP00000380281
Molecular Weight:	Calculated MW: 36.5 kDa Observed MW (SDS-PAGE): 38 kDa
Sequence Fragment:	Met1-Ser62
Sequence:	MDVTSQARGV GLEMYPGTAQ PAAPNTTSPE LNLSHPLLGT ALANGTGELS EHQQYVIGLF LS
Tag:	N-terminal His tag and GST tag
Buffer:	Prior to lyophilization: PBS, pH 7.4, containing 0.01% Sarcosyl, 5% Trehalose.
Concentration:	Prior to lyophilization: 400 µg/ml
Note:	THIS PRODUCT IS FOR RESEARCH USE ONLY. NOT FOR USE IN DIAGNOSTIC, THERAPEUTIC OR COSMETIC PROCEDURES. NOT FOR HUMAN OR ANIMAL CONSUMPTION.