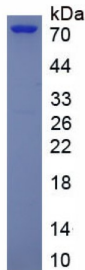
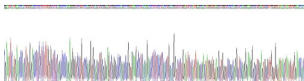


Cow Immunoglobulin M (IgM) Protein

Catalogue No.:abx653817



SDS-PAGE analysis of recombinant Cow Immunoglobulin M (IgM) Protein.



Gene sequencing extract of recombinant Cow Immunoglobulin M (IgM) Protein.

Cow Immunoglobulin M (IgM) Protein is a Recombinant Cow protein expressed in E. coli.

Target:	Immunoglobulin M (IgM)
Research Area:	Infection Immunity, Immunology, Hematology
Origin:	Cow
Expression:	Recombinant
Tested Applications:	WB, SDS-PAGE
Host:	E. coli
Conjugation:	Unconjugated
Form:	Lyophilized
Purity:	> 90%

# Datasheet

Version: 2.0.0

Revision date: 26 Jun 2025



<b>Reconstitution:</b>	To keep the original salt concentration, we recommend reconstituting to the original concentration prior to lyophilization (see Concentration) in ddH <sub>2</sub> O. If a lower concentration is required, dilute in PBS, pH 7.4. If a higher concentration is required, the product can be reconstituted directly in PBS, pH 7.4, though please note that this will change the overall salt concentration. The stock concentration should be between 0.1-1.0 mg/ml. Do not vortex.
<b>Storage:</b>	Store at 2-8 °C for up to one month. Store at -80 °C for up to one year. Avoid repeated freeze/thaw cycles.
<b>Molecular Weight:</b>	Calculated MW: 68.7 kDa Observed MW: 70 kDa
<b>Sequence Fragment:</b>	Met1-Tyr597
<b>Tag:</b>	N-terminal His tag
<b>Buffer:</b>	Prior to lyophilization: PBS, pH 7.4, containing 0.01% Sarcosyl, 1 mM DTT, 5% Trehalose and Proclin-300.
<b>Activity:</b>	Not tested
<b>Concentration:</b>	Prior to lyophilization: 200 µg/ml
<b>Note:</b>	THIS PRODUCT IS FOR RESEARCH USE ONLY. NOT FOR USE IN DIAGNOSTIC, THERAPEUTIC OR COSMETIC PROCEDURES. NOT FOR HUMAN OR ANIMAL CONSUMPTION.