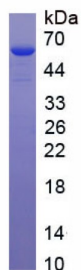
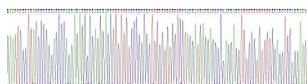


Human Insulin Like Growth Factor Binding Protein, Acid Labile Subunit (IGFALS) Protein

Catalogue No.: abx653875



SDS-PAGE analysis of recombinant Human Insulin Like Growth Factor Binding Protein, Acid Labile Subunit (IGFALS) Protein.



Gene sequencing extract of recombinant Human Insulin Like Growth Factor Binding Protein, Acid Labile Subunit (IGFALS) Protein.

Human Insulin Like Growth Factor Binding Protein, Acid Labile Subunit (IGFALS) Protein is a Recombinant Human protein expressed in *E. coli*.

Target:	Insulin Like Growth Factor Binding Protein, Acid Labile Subunit (IGFALS)
Origin:	Human
Expression:	Recombinant
Tested Applications:	WB, SDS-PAGE
Host:	<i>E. coli</i>
Conjugation:	Unconjugated
Form:	Lyophilized
Purity:	> 90%

Datasheet

Version: 2.0.0
Revision date: 24 Jun 2025



Reconstitution:	To keep the original salt concentration, we recommend reconstituting to the original concentration prior to lyophilization (see Concentration) in ddH ₂ O. If a lower concentration is required, dilute in PBS, pH 7.4. If a higher concentration is required, the product can be reconstituted directly in PBS, pH 7.4, though please note that this will change the overall salt concentration. The stock concentration should be between 0.1-1.0 mg/ml. Do not vortex.
Storage:	Store at 2-8 °C for up to one month. Store at -80 °C for up to one year. Avoid repeated freeze/thaw cycles.
Molecular Weight:	Calculated MW: 67.0 kDa Observed MW: 60 kDa
Sequence Fragment:	Ala28-Cys605
Tag:	N-terminal His tag
Buffer:	Prior to lyophilization: PBS, pH 7.4, containing 0.01% Sarcosyl, 1 mM DTT, 5% Trehalose and Proclin-300.
Activity:	Not tested
Concentration:	Prior to lyophilization: 200 µg/ml
Note:	THIS PRODUCT IS FOR RESEARCH USE ONLY. NOT FOR USE IN DIAGNOSTIC, THERAPEUTIC OR COSMETIC PROCEDURES. NOT FOR HUMAN OR ANIMAL CONSUMPTION.

For Reference Only