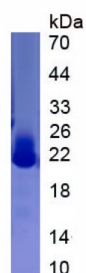
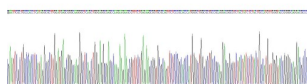


Rat Lymphotoxin Beta (LTb) Protein

Catalogue No.: abx654219



SDS-PAGE analysis of recombinant Rat Lymphotoxin Beta (LTb) Protein.



Gene sequencing extract of recombinant Rat Lymphotoxin Beta (LTb) Protein.

Rat Lymphotoxin Beta (LTb) Protein is a Recombinant Rat protein expressed in *E. coli*.

Target: Lymphotoxin Beta (LTb)

Origin: Rat

Expression: Recombinant

Tested Applications: WB, SDS-PAGE

Host: *E. coli*

Conjugation: Unconjugated

Form: Lyophilized

Purity: > 90%

Reconstitution: To keep the original salt concentration, we recommend reconstituting to the original concentration prior to lyophilization (see Concentration) in ddH₂O. If a lower concentration is required, dilute in PBS, pH 7.4. If a higher concentration is required, the product can be reconstituted directly in PBS, pH 7.4, though please note that this will change the overall salt concentration. The stock concentration should be between 0.1-1.0 mg/ml. Do not vortex.

Datasheet

Version: 2.0.0

Revision date: 27 Jun 2025



Storage:	Store at 2-8 °C for up to one month. Store at -80 °C for up to one year. Avoid repeated freeze/thaw cycles.
Molecular Weight:	Calculated MW: 19.2 kDa Observed MW: 21, 25 kDa
Sequence Fragment:	Ala155-Val305
Tag:	N-terminal His tag
Buffer:	Prior to lyophilization: PBS, pH 7.4, containing 0.01% Sarcosyl, 1 mM DTT, 5% Trehalose and Proclin-300.
Activity:	Not tested
Concentration:	Prior to lyophilization: 200 µg/ml
Note:	THIS PRODUCT IS FOR RESEARCH USE ONLY. NOT FOR USE IN DIAGNOSTIC, THERAPEUTIC OR COSMETIC PROCEDURES. NOT FOR HUMAN OR ANIMAL CONSUMPTION.

For Reference Only