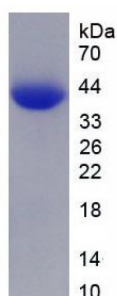
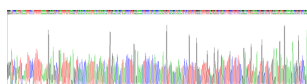


Human B-Lymphocyte Antigen CD20 (MS4A1) Protein

Catalogue No.: abx654341



SDS-PAGE analysis of recombinant Human CD20.



Gene sequencing extract of recombinant Human CD20.

Human Membrane Spanning 4 Domains Subfamily A, Member 1 (CD20) Protein is a Recombinant Human protein expressed in *E. coli*.

Target: B-Lymphocyte Antigen CD20 (MS4A1)

Origin: Human

Expression: Recombinant

Tested Applications: WB, SDS-PAGE

Host: *E. coli*

Conjugation: Unconjugated

Form: Lyophilized

Purity: > 95%

Reconstitution: Reconstitute in ddH₂O to a concentration up to 0.2 mg/ml. Do not vortex.

Storage: Store at 2-8 °C for up to one month. Store at -80 °C for up to one year. Avoid repeated freeze/thaw cycles.

Datasheet

Version: 5.0.0
Revision date: 19 Jun 2025



UniProt Primary AC: P11836 ([UniProt](#), [ExPASy](#))

Gene Symbol: MS4A1

GeneID: [931](#)

OMIM: [112210](#)

HGNC: 7315

KEGG: hsa:931

Ensembl: ENSG00000156738

String: [9606.ENSP00000314620](#)

Molecular Weight: Calculated MW: 38.3 kDa

Observed MW (SDS-PAGE): 43 kDa

Possible reasons why the actual band size differs from the predicted band size:

1. Splice variants. Alternative splicing may create different sized proteins from the same gene.
2. Relative charge. The composition of amino acids may affect the charge of the protein.
3. Post-translational modification. Phosphorylation, glycosylation, methylation etc. may affect the band size.
4. Post-translational cleavage. Many proteins are synthesised as pro-proteins, and then cleaved to give the active form.
5. Polymerisation of the target protein. Dimerisation, multimerisation etc. will increase the band size observed.

Sequence Fragment: Lys142-Pro297

Sequence: KISHFLKME SLNFIRAHTP YINIYNCEPA NPSEKNPST QYCYSIQSLF LGILSVMLIF AFFQELVIAG
IVENEWKRTC SRPKSNIVLL SAEKKEQTI EIKEEVVGLT ETSSQPKNEE DIEIPIQEE EEEETETNFP
EPPQDQESSP IENDSSP

Tag: N-terminal His and TrxA tags

Buffer: Prior to lyophilization: PBS, pH 7.4, containing 0.01% Sarcosyl, 5% Trehalose.

Activity: Not tested

Concentration: Prior to lyophilization: 50 µg/ml

Note: THIS PRODUCT IS FOR RESEARCH USE ONLY. NOT FOR USE IN DIAGNOSTIC, THERAPEUTIC OR COSMETIC PROCEDURES. NOT FOR HUMAN OR ANIMAL CONSUMPTION.