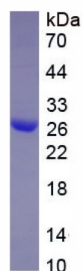
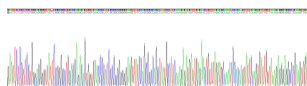


Human DNA Mismatch Repair Protein Mlh1 (MLH1) Protein

Catalogue No.: abx654421



SDS-PAGE analysis of recombinant Human MutL Homolog 1 (MLH1) Protein.



Gene sequencing extract of recombinant Human MutL Homolog 1 (MLH1) Protein.

Human DNA Mismatch Repair Protein Mlh1 (MLH1) Protein is a Recombinant Human protein expressed in E. coli.

Target: DNA Mismatch Repair Protein Mlh1 (MLH1)

Origin: Human

Expression: Recombinant

Tested Applications: WB, SDS-PAGE

Host: E. coli

Conjugation: Unconjugated

Form: Lyophilized

Purity: > 90%

Reconstitution: To keep the original salt concentration, we recommend reconstituting to the original concentration prior to lyophilization (see Concentration) in ddH₂O. If a lower concentration is required, dilute in PBS, pH 7.4. If a higher concentration is required, the product can be reconstituted directly in PBS, pH 7.4, though please note that this will change the overall salt concentration. The stock concentration should be between 0.1-1.0 mg/ml. Do not vortex.

Datasheet

Version: 3.0.0
Revision date: 21 Jun 2025



Storage: Store at 2-8 °C for up to one month. Store at -80 °C for up to one year. Avoid repeated freeze/thaw cycles.

UniProt Primary AC: P40692 ([UniProt](#), [ExPASy](#))

Gene Symbol: MLH1

GeneID: [4292](#)

OMIM: [114500](#)

NCBI Accession: NP_000240.1, NM_000249.3

HGNC: 7127

KEGG: hsa:4292

Ensembl: ENSG00000076242

String: [9606.ENSP00000231790](#)

Molecular Weight: Calculated MW: 26.7 kDa
Observed MW: 27 kDa

Sequence Fragment: Ser2-Val213

Tag: N-terminal His tag

Buffer: Prior to lyophilization: PBS, pH 7.4, containing 0.01% Sarcosyl, 1 mM DTT, 5% Trehalose and Proclin-300.

Activity: Not tested

Concentration: Prior to lyophilization: 200 µg/ml

Note: THIS PRODUCT IS FOR RESEARCH USE ONLY. NOT FOR USE IN DIAGNOSTIC, THERAPEUTIC OR COSMETIC PROCEDURES. NOT FOR HUMAN OR ANIMAL CONSUMPTION.