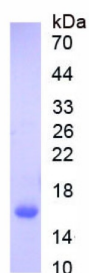


Human Neuropeptide Y Receptor Y1 (NPY1R) Protein

Catalogue No.: abx654531



SDS-PAGE analysis of recombinant Human Neuropeptide Y Receptor Y1 (NPY1R) Protein.

Human Neuropeptide Y Receptor Y1 (NPY1R) Protein is a Recombinant Human protein expressed in *E. coli*.

Target:	Neuropeptide Y Receptor Y1 (NPY1R)
Origin:	Human
Expression:	Recombinant
Tested Applications:	WB, SDS-PAGE
Host:	<i>E. coli</i>
Conjugation:	Unconjugated
Form:	Lyophilized
Purity:	> 90%
Reconstitution:	To keep the original salt concentration, we recommend reconstituting to the original concentration prior to lyophilization (see Concentration) in ddH ₂ O. If a lower concentration is required, dilute in PBS, pH 7.4. If a higher concentration is required, the product can be reconstituted directly in PBS, pH 7.4, though please note that this will change the overall salt concentration. The stock concentration should be between 0.1-1.0 mg/ml. Do not vortex.
Storage:	Store at 2-8 °C for up to one month. Store at -80 °C for up to one year. Avoid repeated freeze/thaw cycles.
Molecular Weight:	Calculated MW: 15.8 kDa Observed MW: 16 kDa
Sequence Fragment:	Phe282-Ile384
Tag:	N-terminal His tag

Datasheet

Version: 2.0.0

Revision date: 04 Jul 2025



Buffer: Prior to lyophilization: PBS, pH 7.4, containing 0.01% Sarcosyl, 1 mM DTT, 5% Trehalose and Proclin-300.

Activity: Not tested

Concentration: Prior to lyophilization: 200 µg/ml

Note: THIS PRODUCT IS FOR RESEARCH USE ONLY. NOT FOR USE IN DIAGNOSTIC, THERAPEUTIC OR COSMETIC PROCEDURES. NOT FOR HUMAN OR ANIMAL CONSUMPTION.

For Reference Only