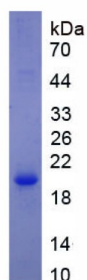


Human Sodium/Glucose Cotransporter 1 (SGLT1) Protein

Catalogue No.: abx655079



SDS-PAGE analysis of recombinant Human SGLT1 Protein.

Human Sodium/Glucose Cotransporter 1 (SGLT1) Protein is a Recombinant Human protein expressed in *E. coli*.

This protein is the immunogen for the following antibodies: [abx178410](#)

Target: Sodium/Glucose Cotransporter 1 (SGLT1)

Origin: Human

Expression: Recombinant

Tested Applications: WB, SDS-PAGE

Host: *E. coli*

Conjugation: Unconjugated

Form: Lyophilized

Purity: > 90%

Reconstitution: To keep the original salt concentration, we recommend reconstituting to the original concentration prior to lyophilization (see Concentration) in ddH₂O. If a lower concentration is required, dilute in 10 mM PBS, pH 7.4. If a higher concentration is required, the product can be reconstituted directly in 10 mM PBS, pH 7.4, though please note that this will change the overall salt concentration. The stock concentration should be between 0.1-1.0 mg/ml. Do not vortex.

Storage: Store at 2-8 °C for up to one month. Store at -80 °C for up to one year. Avoid repeated freeze/thaw cycles.

Molecular Weight: Calculated MW: 19.7 kDa
Observed MW (SDS-PAGE): 20 kDa

Sequence Fragment: Leu527-Ala664

Datasheet

Version: 3.0.0

Revision date: 07 May 2025



Sequence: LYFA IILFAISFIT IVVISLLTKP IPDVHLYRLC WSLRNSKEER IDLDAEEENI QEGPKETIEI
ETQVPEKKKG IFRRAYDLFC GLEQHGAPKM TEEEEKAMKM KMTDTSEKPL WRTVLNVNGI
ILVTVAVFCH AYFA

Tag: N-terminal His tag

Buffer: Prior to lyophilization: PBS, pH 7.4, containing 0.01% Sarcosyl, 1 mM DTT, 5% Trehalose and Proclin-300.

Activity: Not tested

Concentration: Prior to lyophilization: 200 µg/ml

Note: THIS PRODUCT IS FOR RESEARCH USE ONLY. NOT FOR USE IN DIAGNOSTIC, THERAPEUTIC OR COSMETIC PROCEDURES. NOT FOR HUMAN OR ANIMAL CONSUMPTION.

For Reference Only