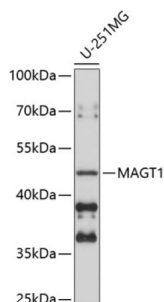


Magnesium Transporter Protein 1 (MAGT1) Antibody

Catalogue No.: abx003849



Western blot analysis of lysates from U-251MG cells, using MAGT1 Antibody at 1/1000 dilution. Secondary antibody: HRP-conjugated Goat anti-Rabbit IgG (H+L) at 1/10000 dilution. Lysates/proteins: 25 µg per lane. Blocking buffer: 3% nonfat dry milk in TBST. Exposure time: 90s.

MAGT1 Antibody is a Rabbit Polyclonal antibody against MAGT1. This gene encodes a magnesium cation transporter protein that localizes to the cell membrane. This protein also associates with N-oligosaccharyl transferase and therefore may have a role in N-glycosylation. Mutations in this gene cause mental retardation X-linked type 95 (MRX95). This gene may have multiple in-frame translation initiation sites, one of which would encode a shorter protein with an N-terminus containing a signal peptide at amino acids 1-29.

Target:	Magnesium Transporter Protein 1 (MAGT1)
Clonality:	Polyclonal
Reactivity:	Human
Tested Applications:	ELISA, WB
Host:	Rabbit
Recommended dilutions:	ELISA: 1 µg/ml, WB: 1/500 - 1/1000. Optimal dilutions/concentrations should be determined by the end user.
Conjugation:	Unconjugated
Immunogen:	Recombinant fusion protein containing a sequence corresponding to amino acids 60-220 of human MAGT1.
Isotype:	IgG
Form:	Liquid
Purification:	Purified by affinity chromatography.
Storage:	Aliquot and store at -20°C. Avoid repeated freeze/thaw cycles.
UniProt Primary AC:	Q9H0U3 (UniProt , ExPASy)

Datasheet

Version: 3.0.0

Revision date: 26 Jun 2025



Gene Symbol: MAGT1

GeneID: [84061](#)

NCBI Accession: NP_115497.4

String: [9606.ENSP00000354649](#)

Molecular Weight: Calculated MW: 38 kDa
Observed MW: 50 kDa

Buffer: PBS, pH 7.3, containing 0.02% sodium azide, 50% glycerol.

Concentration: > 0.2 mg/ml

Note: THIS PRODUCT IS FOR RESEARCH USE ONLY. NOT FOR USE IN DIAGNOSTIC, THERAPEUTIC OR COSMETIC PROCEDURES. NOT FOR HUMAN OR ANIMAL CONSUMPTION.

For Reference Only