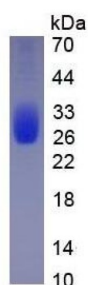


## Dog Interleukin-6 (IL6) Protein (Active)

Catalogue No.: abx655740



SDS-PAGE analysis of recombinant Dog Interleukin-6 (IL6) Protein.

Dog Interleukin-6 (IL6) Protein (Active) is an Active Recombinant Dog protein.

**Target:** Interleukin-6 (IL6)

**Research Area:** Immunology, Tumour Immunity, Infection Immunity, Cardiovascular Biology

**Origin:** Dog

**Expression:** Recombinant

**Tested Applications:** WB, SDS-PAGE

**Conjugation:** Unconjugated

**Form:** Lyophilized

**Purity:** > 90%

**Reconstitution:** To keep the original salt concentration, we recommend reconstituting to the original concentration prior to lyophilization (see Concentration) in ddH<sub>2</sub>O. If a lower concentration is required, dilute in 20 mM Tris, 150 mM NaCl, pH 8.0. If a higher concentration is required, the product can be reconstituted directly in 20 mM Tris, 150 mM NaCl, pH 8.0, though please note that this will change the overall salt concentration. The stock concentration should be between 0.1-1.0 mg/ml. Do not vortex.

**Storage:** Store at 2-8 °C for up to one month. Store at -80 °C for up to one year. Avoid repeated freeze/thaw cycles.

**UniProt Primary AC:** P41323 ([UniProt](#), [ExPASy](#))

**Gene Symbol:** IL6

**KEGG:** cfa:403985

# Datasheet

Version: 2.0.0

Revision date: 30 Jun 2025



**String:** [9612.ENSCLAFP00000004016](#)

**Sequence Fragment:** Please enquire.

**Tag:** Please enquire.

**Buffer:** Prior to lyophilization: 20 mM Tris, 150 mM NaCl, pH 8.0, containing 1 mM EDTA, 1 mM DTT, 0.01% Sarcosyl, 5% Trehalose and Proclin-300.

**Activity:** Active

**Biological Activity:** Please enquire.

**Concentration:** Prior to lyophilization: 200 µg/ml

**Note:** THIS PRODUCT IS FOR RESEARCH USE ONLY. NOT FOR USE IN DIAGNOSTIC, THERAPEUTIC OR COSMETIC PROCEDURES. NOT FOR HUMAN OR ANIMAL CONSUMPTION.

For Reference Only