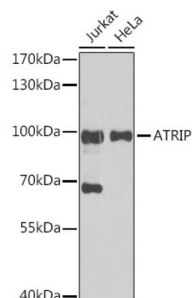
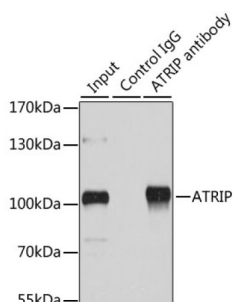


ATR-Interacting Protein (ATRIP) Antibody

Catalogue No.: abx003851



Western blot analysis of various lysates using ATRIP Antibody at 1/1000 dilution. Secondary antibody: HRP-conjugated Goat anti-Rabbit IgG (H+L) at 1/10000 dilution. Lysates/proteins: 25 µg per lane. Blocking buffer: 3% nonfat dry milk in TBST. Exposure time: 30s.



Immunoprecipitation analysis of 200 µg extracts of HeLa cells using 1 µg ATRIP antibody. Western blot was performed from the immunoprecipitate using ATRIP antibody at a dilution of 1/1000.

ATRIP Antibody is a Rabbit Polyclonal antibody against ATRIP. This gene encodes an essential component of the DNA damage checkpoint. The encoded protein binds to single-stranded DNA coated with replication protein A. The protein also interacts with the ataxia telangiectasia and Rad3 related protein kinase, resulting in its accumulation at intranuclear foci induced by DNA damage. Multiple transcript variants encoding different isoforms have been found for this gene.

Target: ATR-Interacting Protein (ATRIP)

Clonality: Polyclonal

Reactivity: Human

Tested Applications: ELISA, WB, IF/ICC, IP

Host: Rabbit

Recommended dilutions: ELISA: 1 µg/ml, WB: 1/500 - 1/2000, IF/ICC: 1/50 - 1/200, IP: 0.5 µg - 4 µg antibody per 200 µg - 400 µg extracts of whole cells. Optimal dilutions/concentrations should be determined by the end user.

Conjugation: Unconjugated

Immunogen: Recombinant fusion protein containing a sequence corresponding to amino acids 1-260 of human ATRIP.

Isotype: IgG

Datasheet

Version: 3.0.0
Revision date: 21 Jun 2025



Form:	Liquid
Purification:	Purified by affinity chromatography.
Storage:	Aliquot and store at -20°C. Avoid repeated freeze/thaw cycles.
UniProt Primary AC:	Q8WXE1 (UniProt , ExPASy)
Gene Symbol:	ATRIP
GeneID:	84126
NCBI Accession:	NP_569055.1
KEGG:	hsa:84126
String:	9606.ENSP00000323099
Molecular Weight:	Calculated MW: 86 kDa Observed MW: 100/113 kDa
Buffer:	PBS, pH 7.3, containing 0.02% sodium azide, 50% glycerol.
Concentration:	> 0.2 mg/ml
Note:	THIS PRODUCT IS FOR RESEARCH USE ONLY. NOT FOR USE IN DIAGNOSTIC, THERAPEUTIC OR COSMETIC PROCEDURES. NOT FOR HUMAN OR ANIMAL CONSUMPTION.