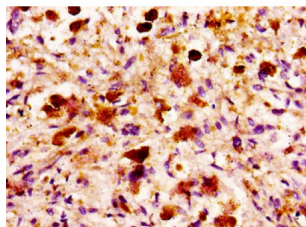


Mannose Associated Serine Protease 2 (MASP2) Antibody

Catalogue No.: abx338477



IHC-P analysis of human melanoma, using MASP2 antibody (1/100 dilution). After dewaxing and hydration, antigen retrieval was mediated by high pressure in a citrate buffer (pH 6.0). Section was blocked with 10% normal goat serum for 30 min at room temperature. The primary antibody (1% BSA) was then incubated at 4°C overnight. The primary is detected by a biotin-conjugated secondary antibody and visualized using an HRP-conjugated SP system.

MASP2 Antibody is a Rabbit Polyclonal against MASP2.

Target:	Mannose Associated Serine Protease 2 (MASP2)
Clonality:	Polyclonal
Reactivity:	Human
Tested Applications:	ELISA, IHC
Host:	Rabbit
Recommended dilutions:	IHC: 1/20 - 1/200. Optimal dilutions/concentrations should be determined by the end user.
Conjugation:	Unconjugated
Immunogen:	Recombinant Human Mannan-binding lectin serine protease 2 protein (189-314 AA).
Isotype:	IgG
Form:	Liquid
Purity:	> 95%
Purification:	Purified by Protein G.
Storage:	Aliquot and store at -20°C. Avoid repeated freeze/thaw cycles.
UniProt Primary AC:	O00187 (UniProt , ExPASy)
Gene Symbol:	MASP2

Datasheet

Version: 6.0.0

Revision date: 30 Jun 2025



GeneID: [10747](#)

KEGG: hsa:10747

String: [9606.ENSP00000383690](#)

Buffer: 0.01 M PBS, pH 7.4, 0.03% Proclin-300 and 50% Glycerol.

Concentration: 3 mg/ml

Note: THIS PRODUCT IS FOR RESEARCH USE ONLY. NOT FOR USE IN DIAGNOSTIC, THERAPEUTIC OR COSMETIC PROCEDURES. NOT FOR HUMAN OR ANIMAL CONSUMPTION.

For Reference Only