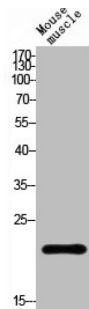


Regulator Of G Protein Signaling 1 (RGS1) Antibody

Catalogue No.: abx328666



WB analysis of mouse muscle cells, using RGS1 antibody.

RGS1 Antibody is a Rabbit Polyclonal against RGS1.

Target:	Regulator Of G Protein Signaling 1 (RGS1)
Clonality:	Polyclonal
Reactivity:	Human, Mouse, Rat
Tested Applications:	ELISA, WB, IHC
Host:	Rabbit
Recommended dilutions:	ELISA: 1/20000, WB: 1/500 - 1/2000, IHC: 1/100 - 1/300. Optimal dilutions/concentrations should be determined by the end user.
Conjugation:	Unconjugated
Immunogen:	Synthesized peptide derived from the Internal region of human RGS1.
Isotype:	IgG
Form:	Liquid
Purification:	Purified by affinity chromatography.
Storage:	Aliquot and store at -20°C. Avoid repeated freeze/thaw cycles.
UniProt Primary AC:	Q08116 (UniProt , ExpASY)
Gene Symbol:	RGS1
GeneID:	5996

Datasheet

Version: 2.0.0

Revision date: 20 Aug 2025



KEGG: hsa:5996

String: [9606.ENSP00000356429](#)

Buffer: PBS containing 50% glycerol, 0.5% BSA and 0.02% sodium azide.

Concentration: 1 mg/ml

Note: THIS PRODUCT IS FOR RESEARCH USE ONLY. NOT FOR USE IN DIAGNOSTIC, THERAPEUTIC OR COSMETIC PROCEDURES. NOT FOR HUMAN OR ANIMAL CONSUMPTION.

For Reference Only