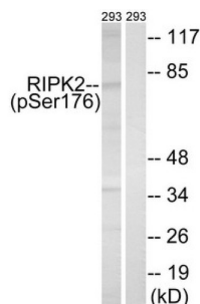
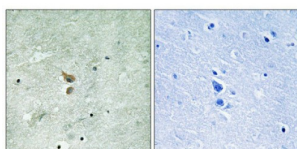


Receptor Interacting Serine Threonine Kinase 2 Phospho-Ser176 (RIPK2 pS176) Antibody

Catalogue No.: abx333065



Western blot analysis of extracts from 293 cells, treated with UV (15 mins), using RIPK2 (Phospho-Ser176) antibody. The lane on the right is treated with the synthesized peptide.



Immunohistochemistry analysis of paraffin-embedded human brain tissue using RIPK2 (Phospho-Ser176) antibody. The picture on the right is treated with the synthesized peptide.

RIPK2 (pS176) Antibody is a Rabbit Polyclonal against RIPK2 (pS176).

Target:	Receptor Interacting Serine Threonine Kinase 2 Phospho-Ser176 (RIPK2 pS176)
Clonality:	Polyclonal
Target Modification:	Ser176
Modification:	Phosphorylation
Reactivity:	Human, Mouse
Tested Applications:	ELISA, WB, IHC
Host:	Rabbit
Recommended dilutions:	WB: 1/500 - 1/3000, IHC: 1/50 - 1/100. Optimal dilutions/concentrations should be determined by the end user.
Conjugation:	Unconjugated
Immunogen:	Peptide sequence around phosphorylation site of serine 176 (S-L-S (p)-Q-S) derived from Human RIPK2.

Datasheet

Version: 3.0.0
Revision date: 20 Aug 2025



Isotype:	IgG
Form:	Liquid
Purification:	Purified by affinity chromatography.
Storage:	Aliquot and store at -20°C. Avoid repeated freeze/thaw cycles.
UniProt Primary AC:	O43353 (UniProt , ExPASy)
Gene Symbol:	RIPK2
GeneID:	8767
KEGG:	hsa:8767
String:	9606.ENSP00000220751
Buffer:	PBS (without Mg^{2+} and Ca^{2+}), pH 7.4, 150 mM NaCl, 0.02% sodium azide, 50% glycerol.
Concentration:	1 mg/ml
Note:	THIS PRODUCT IS FOR RESEARCH USE ONLY. NOT FOR USE IN DIAGNOSTIC, THERAPEUTIC OR COSMETIC PROCEDURES. NOT FOR HUMAN OR ANIMAL CONSUMPTION.