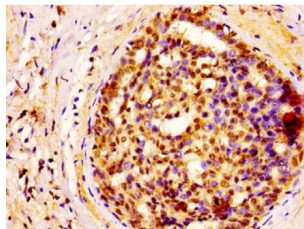
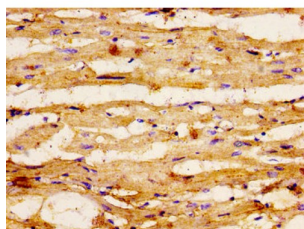


Eukaryotic Peptide Chain Release Factor GTP-Binding Subunit ERF3A (GSPT1) Antibody

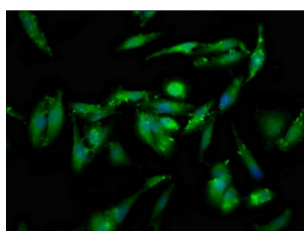
Catalogue No.: abx334245



IHC-P analysis of human breast cancer tissue, using GSPT1 antibody (1/400 dilution). After dewaxing and hydration, antigen retrieval was mediated by high pressure in a citrate buffer (pH 6.0). Section was blocked with 10% normal goat serum for 30 min at room temperature. The primary antibody (1% BSA) was then incubated at 4°C overnight. The primary is detected by a biotin-conjugated secondary antibody and visualized using an HRP-conjugated SP system.



IHC-P analysis of human heart tissue, using GSPT1 antibody (1/400 dilution). After dewaxing and hydration, antigen retrieval was mediated by high pressure in a citrate buffer (pH 6.0). Section was blocked with 10% normal goat serum for 30 min at room temperature. The primary antibody (1% BSA) was then incubated at 4°C overnight. The primary is detected by a biotin-conjugated secondary antibody and visualized using an HRP-conjugated SP system.



IF analysis of HeLa cells, using GSPT1 antibody (1/133 dilution), with DAPI staining. The cells were fixed in 4% formaldehyde, permeabilized using 0.2% Triton X-100 and blocked in 10% normal Goat Serum. The cells were then incubated with the antibody overnight at 4 °C. The secondary antibody was AF488-conjugated Goat Anti-Rabbit IgG (H+L).

GSPT1 Antibody is a Rabbit Polyclonal against GSPT1.

Target: Eukaryotic Peptide Chain Release Factor GTP-Binding Subunit ERF3A (GSPT1)

Clonality: Polyclonal

Reactivity: Human

Tested Applications: ELISA, IHC, IF/ICC

Host: Rabbit

Recommended dilutions: IHC: 1/200 - 1/500, IF/ICC: 1/50 - 1/200. Optimal dilutions/concentrations should be determined by the end user.

Datasheet

Version: 3.0.0
Revision date: 23 Jun 2025



Conjugation:	Unconjugated
Immunogen:	Recombinant Human Eukaryotic peptide chain release factor GTP-binding subunit ERF3A protein (6-142 AA).
Isotype:	IgG
Form:	Liquid
Purity:	> 95%
Purification:	Purified by Protein G.
Storage:	Aliquot and store at -20°C. Avoid repeated freeze/thaw cycles.
UniProt Primary AC:	P15170 (UniProt , ExPASy)
Gene Symbol:	GSPT1
GenelD:	2935
OMIM:	139259
KEGG:	hsa:2935
String:	9606.ENSP00000398131
Buffer:	0.01 M PBS, pH 7.4, 0.03% Proclin-300 and 50% Glycerol.
Concentration:	3.365 mg/ml
Note:	THIS PRODUCT IS FOR RESEARCH USE ONLY. NOT FOR USE IN DIAGNOSTIC, THERAPEUTIC OR COSMETIC PROCEDURES. NOT FOR HUMAN OR ANIMAL CONSUMPTION.