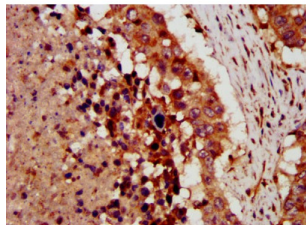


Cytokine Receptor Like Factor 1 (CRLF1) Antibody

Catalogue No.: abx334268



IHC-P analysis of human lung cancer tissue, using CRLF1 antibody (1/300 dilution). After dewaxing and hydration, antigen retrieval was mediated by high pressure in a citrate buffer (pH 6.0). The section was blocked with 10% normal goat serum for 30 min at room temperature. The primary antibody (1% BSA) was then incubated at 4 °C overnight. The primary is detected by a biotin-conjugated secondary antibody and visualized using an HRP-conjugated SP system.

CRLF1 Antibody is a Rabbit Polyclonal against CRLF1.

Target: Cytokine Receptor Like Factor 1 (CRLF1)

Clonality: Polyclonal

Reactivity: Human

Tested Applications: ELISA, IHC

Host: Rabbit

Recommended dilutions: IHC: 1/200 - 1/500. Optimal dilutions/concentrations should be determined by the end user.

Conjugation: Unconjugated

Immunogen: Recombinant Human Cytokine receptor-like factor 1 protein (318-422 AA).

Isotype: IgG

Form: Liquid

Purity: > 95%

Purification: Purified by Protein G.

Storage: Aliquot and store at -20°C. Avoid repeated freeze/thaw cycles.

UniProt Primary AC: O75462 ([UniProt](#), [ExPASy](#))

Gene Symbol: CRLF1

Datasheet

Version: 3.0.0

Revision date: 28 Sep 2025



GeneID: [9244](#)

KEGG: hsa:9244

String: [9606.ENSP00000376188](#)

Buffer: 0.01 M PBS, pH 7.4, 0.03% Proclin-300 and 50% Glycerol.

Concentration: 3.08 mg/ml

Note: THIS PRODUCT IS FOR RESEARCH USE ONLY. NOT FOR USE IN DIAGNOSTIC, THERAPEUTIC OR COSMETIC PROCEDURES. NOT FOR HUMAN OR ANIMAL CONSUMPTION.

For Reference Only