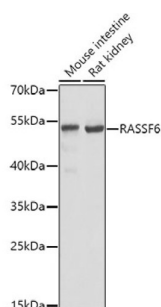


Ras Association Domain-Containing Protein 6 (RASSF6) Antibody

Catalogue No.: abx003979



Western blot analysis of extracts of various cell lines using RASSF6 Antibody (1/1000 dilution).

RASSF6 Antibody is a Rabbit Polyclonal antibody against RASSF6. This gene encodes a member of the Ras-association domain family (RASSF). Members of this family form the core of a highly conserved tumor suppressor network, the Salvador-Warts-Hippo (SWH) pathway. The protein encoded by this gene is a Ras effector protein that induces apoptosis. A genomic region containing this gene has been linked to susceptibility to viral bronchiolitis. Alternative splicing results in multiple transcript variants and protein isoforms.

Target: Ras Association Domain-Containing Protein 6 (RASSF6)

Clonality: Polyclonal

Reactivity: Mouse, Rat

Tested Applications: WB

Host: Rabbit

Recommended dilutions: WB: 1/500 - 1/2000. Optimal dilutions/concentrations should be determined by the end user.

Conjugation: Unconjugated

Immunogen: Recombinant fusion protein corresponding to human RASSF6

Isotype: IgG

Form: Liquid

Purification: Purified by affinity chromatography.

Storage: Aliquot and store at -20°C. Avoid repeated freeze/thaw cycles.

UniProt Primary AC: Q6ZTQ3 ([UniProt](#), [ExPASy](#))

Datasheet

Version: 4.0.0

Revision date: 30 Aug 2025



Gene Symbol: RASSF6

GeneID: [166824](#)

NCBI Accession: NP_001257320.1

KEGG: hsa:166824

String: [9606.ENSP00000340578](#)

Molecular Weight: Calculated MW: 35 kDa/37 kDa/39 kDa/43 kDa
Observed MW: 54 kDa

Buffer: PBS, pH 7.3, containing 0.02% sodium azide, 50% glycerol.

Concentration: 1 mg/ml

Note: THIS PRODUCT IS FOR RESEARCH USE ONLY. NOT FOR USE IN DIAGNOSTIC, THERAPEUTIC OR COSMETIC PROCEDURES. NOT FOR HUMAN OR ANIMAL CONSUMPTION.

For Reference Only