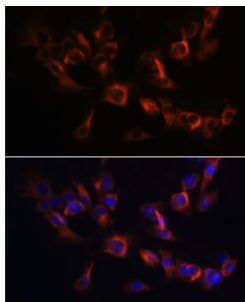
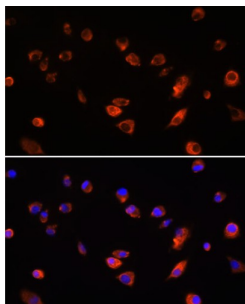


ADP-Ribosylation Factor-Like 13B (ARL13B) Antibody

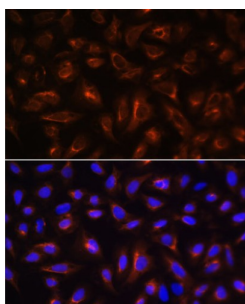
Catalogue No.: abx003990



Immunofluorescence analysis of C6 cells using ARL13B Antibody (1/100 dilution). Blue: DAPI for nuclear staining.



Immunofluorescence analysis of L929 cells using ARL13B Antibody (1/100 dilution). Blue: DAPI for nuclear staining.



Immunofluorescence analysis of U-2 OS cells using ARL13B Antibody (1/100 dilution). Blue: DAPI for nuclear staining.

ARL13B Antibody is a Rabbit Polyclonal antibody against ARL13B. This gene encodes a member of the ADP-ribosylation factor-like family. The encoded protein is a small GTPase that contains both N-terminal and C-terminal guanine nucleotide-binding motifs. This protein is localized in the cilia and plays a role in cilia formation and in maintenance of cilia. Mutations in this gene are the cause of Joubert syndrome 8. Alternate splicing results in multiple transcript variants.

Target: ADP-Ribosylation Factor-Like 13B (ARL13B)

Clonality: Polyclonal

Reactivity: Human, Mouse, Rat

Tested Applications: IF/ICC

Host: Rabbit

Recommended dilutions: IF/ICC: 1/50 - 1/200. Optimal dilutions/concentrations should be determined by the end user.

Datasheet

Version: 8.0.0
Revision date: 05 Mar 2025



Conjugation:	Unconjugated
Immunogen:	Recombinant fusion protein corresponding to human ARL13B
Isotype:	IgG
Form:	Liquid
Purification:	Purified by affinity chromatography.
Storage:	Aliquot and store at -20°C. Avoid repeated freeze/thaw cycles.
UniProt Primary AC:	Q3SXY8 (UniProt , ExPASy)
Gene Symbol:	ARL13B
GeneID:	200894
NCBI Accession:	NP_878899.1
KEGG:	hsa:200894
String:	9606.ENSP00000377769
Buffer:	PBS, pH 7.3, containing 0.02% sodium azide, 50% glycerol.
Concentration:	1 mg/ml
Note:	THIS PRODUCT IS FOR RESEARCH USE ONLY. NOT FOR USE IN DIAGNOSTIC, THERAPEUTIC OR COSMETIC PROCEDURES. NOT FOR HUMAN OR ANIMAL CONSUMPTION.