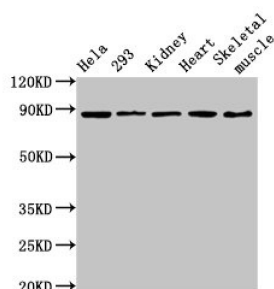
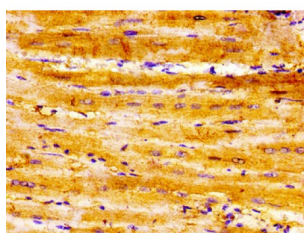


## Semaphorin 3A (SEMA3A) Antibody

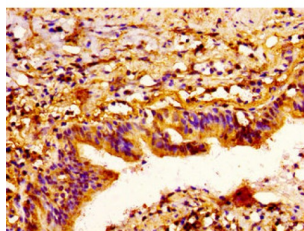
Catalogue No.: abx338896



Western blot analysis of HeLa (Lane 1), 293 (Lane 2) cell lysates, Rat Kidney (Lane 3), Mouse Heart (Lane 4), Mouse Skeletal Muscle (Lane 5) tissue homogenates using SEMA3A Antibody (3.6 µg/ml) followed by Goat polyclonal Anti-Rabbit IgG (1/50000 dilution). Calculated MW: 89 kDa, Observed MW: 89 kDa.



Immunohistochemistry analysis of paraffin-embedded Human heart tissue using SEMA3A Antibody (1/300 dilution, 1% BSA, 4°C overnight) followed by biotin-conjugated secondary antibody and visualised using an HRP-conjugated SP system. After dewaxing and hydration, antigen retrieval was mediated by high pressure in a citrate buffer (pH 6.0). Section was blocked with 10% normal goat serum 30min at RT prior to primary antibody incubation.



Immunohistochemistry analysis of paraffin-embedded Human lung cancer tissue using SEMA3A Antibody (1/300 dilution, 1% BSA, 4°C overnight) followed by biotin-conjugated secondary antibody and visualised using an HRP-conjugated ABC system. After dewaxing and hydration, antigen retrieval was mediated by high pressure in a citrate buffer (pH 6.0). Section was blocked with 10% normal goat serum 30min at RT prior to primary antibody incubation.

SEMA3A Antibody is a Rabbit Polyclonal against SEMA3A.

**Target:** Semaphorin 3A (SEMA3A)

**Clonality:** Polyclonal

**Reactivity:** Human, Mouse, Rat

**Tested Applications:** ELISA, WB, IHC

**Host:** Rabbit

**Recommended dilutions:** WB: 1/500 - 1/5000, IHC: 1/200 - 1/500. Optimal dilutions/concentrations should be determined by the end user.

**Conjugation:** Unconjugated

# Datasheet

Version: 4.0.0  
Revision date: 01 Aug 2025



<b>Immunogen:</b>	Recombinant Human Semaphorin-3A protein (357-445AA).
<b>Isotype:</b>	IgG
<b>Form:</b>	Liquid
<b>Purity:</b>	> 95%
<b>Purification:</b>	Purified by Protein G.
<b>Storage:</b>	Aliquot and store at -20°C. Avoid repeated freeze/thaw cycles.
<b>UniProt Primary AC:</b>	Q14563 ( <a href="#">UniProt</a> , <a href="#">ExPASy</a> )
<b>Gene Symbol:</b>	SEMA3A
<b>GeneID:</b>	<a href="#">10371</a>
<b>KEGG:</b>	hsa:10371
<b>String:</b>	<a href="#">9606.ENSP00000265362</a>
<b>Molecular Weight:</b>	Calculated MW: 89 kDa Observed MW: 89 kDa
<b>Buffer:</b>	0.01 M PBS, pH 7.4, 0.03% Proclin-300 and 50% Glycerol.
<b>Concentration:</b>	3.65 mg/ml
<b>Note:</b>	THIS PRODUCT IS FOR RESEARCH USE ONLY. NOT FOR USE IN DIAGNOSTIC, THERAPEUTIC OR COSMETIC PROCEDURES. NOT FOR HUMAN OR ANIMAL CONSUMPTION.