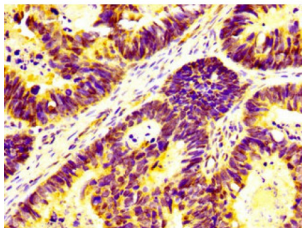
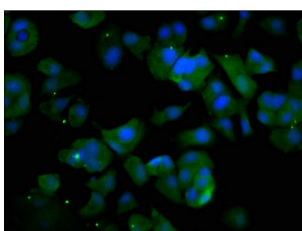


Ubiquitin Associated Protein 2 Like (UBAP2L) Antibody

Catalogue No.: abx334375



Immunohistochemistry analysis of paraffin-embedded Human ovarian cancer tissue using Ubiquitin Associated Protein 2 Like (UBAP2L) Antibody (1/400 dilution, 1% BSA, 4°C overnight) followed by biotin-conjugated secondary antibody and visualised by an HRP-conjugated SP system. Prior to staining, high pressure antigen retrieval was performed in citrate buffer (pH 6.0) and the section blocked with 10% normal goat serum (RT, 30 min).



Immunofluorescence analysis of MCF-7 cells using Ubiquitin Associated Protein 2 Like (UBAP2L) Antibody (1/133 dilution, 4°C overnight), followed by AF488-conjugated Goat Anti-Rabbit IgG secondary antibody and DAPI counterstain. Prior to staining, cells were fixed with 4% formaldehyde, permeabilized in 0.2% Triton X-100 and blocked with 10% normal goat serum.

Ubiquitin Associated Protein 2 Like (UBAP2L) Antibody is a Rabbit Polyclonal against UBAP2L.

Target:	Ubiquitin Associated Protein 2 Like (UBAP2L)
Clonality:	Polyclonal
Reactivity:	Human
Tested Applications:	ELISA, IHC, IF/ICC
Host:	Rabbit
Recommended dilutions:	IHC: 1/200 - 1/500, IF/ICC: 1/50 - 1/200. Optimal dilutions/concentrations should be determined by the end user.
Conjugation:	Unconjugated
Immunogen:	Recombinant Human Ubiquitin-associated protein 2-like protein (104-252AA).
Isotype:	IgG
Form:	Liquid
Purity:	> 95%

Datasheet

Version: 4.0.0
Revision date: 29 Aug 2025



Purification:	Purified by Protein G.
Storage:	Aliquot and store at -20°C. Avoid repeated freeze/thaw cycles.
UniProt Primary AC:	Q14157 (UniProt , ExPASy)
Gene Symbol:	UBAP2L
GeneID:	9898
KEGG:	hsa:9898
String:	9606.ENSP00000389445
Buffer:	0.01 M PBS, pH 7.4, 0.03% Proclin-300 and 50% Glycerol.
Concentration:	1 mg/ml
Note:	THIS PRODUCT IS FOR RESEARCH USE ONLY. NOT FOR USE IN DIAGNOSTIC, THERAPEUTIC OR COSMETIC PROCEDURES. NOT FOR HUMAN OR ANIMAL CONSUMPTION.

For Reference Only