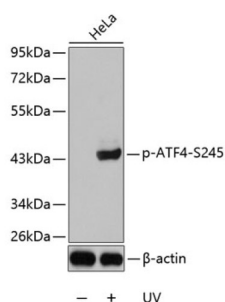


## ATF4 (pS245) Antibody

Catalogue No.: abx000357



Western blot analysis of lysates from HeLa cells using Phospho-ATF4-S245 Antibody. Secondary antibody: HRP-conjugated Goat anti-Rabbit IgG (H+L) at 1/10000 dilution. Lysates/proteins: 25 µg per lane. Blocking buffer: 3% BSA.

ATF4 (pS245) Antibody is a Rabbit Polyclonal antibody against ATF4 (pS245). This gene encodes a transcription factor that was originally identified as a widely expressed mammalian DNA binding protein that could bind a tax-responsive enhancer element in the LTR of HTLV-1. The encoded protein was also isolated and characterized as the cAMP-response element binding protein 2 (CREB-2). The protein encoded by this gene belongs to a family of DNA-binding proteins that includes the AP-1 family of transcription factors, cAMP-response element binding proteins (CREBs) and CREB-like proteins. These transcription factors share a leucine zipper region that is involved in protein-protein interactions, located C-terminal to a stretch of basic amino acids that functions as a DNA binding domain. Two alternative transcripts encoding the same protein have been described. Two pseudogenes are located on the X chromosome at q28 in a region containing a large inverted duplication.

**Target:** ATF4 (pS245)

**Clonality:** Polyclonal

**Reactivity:** Human

**Tested Applications:** WB

**Host:** Rabbit

**Recommended dilutions:** WB: 1/500 - 1/2000. Optimal dilutions/concentrations should be determined by the end user.

**Conjugation:** Unconjugated

**Immunogen:** A phospho specific peptide corresponding to residues surrounding S245 of human ATF4

**Isotype:** IgG

**Form:** Liquid

**Purification:** Purified by affinity chromatography.

**Storage:** Aliquot and store at -20°C. Avoid repeated freeze/thaw cycles.

# Datasheet

Version: 6.0.0

Revision date: 05 Mar 2025



**UniProt Primary AC:** P18848 ([UniProt](#), [ExPASy](#))

**Gene Symbol:** ATF4

**GeneID:** [468](#)

**KEGG:** hsa:468

**String:** [9606.ENSP00000336790](#)

**Molecular Weight:** Calculated MW: 39 kDa  
Observed MW: 45 kDa

**Buffer:** PBS, pH 7.3, containing 0.02% sodium azide, 50% glycerol.

**Concentration:** > 0.2 mg/ml

**Note:** THIS PRODUCT IS FOR RESEARCH USE ONLY. NOT FOR USE IN DIAGNOSTIC, THERAPEUTIC OR COSMETIC PROCEDURES. NOT FOR HUMAN OR ANIMAL CONSUMPTION.

For Reference Only