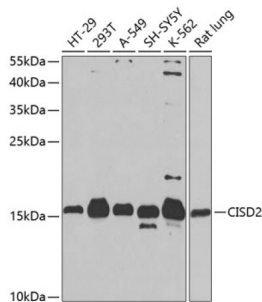


CDGSH Iron Sulfur Domain 2 (CISD2) Antibody

Catalogue No.: abx004018



Western blot analysis of extracts of various cell lines using CISD2 Antibody (1/1000 dilution).

CISD2 Antibody is a Rabbit Polyclonal antibody against CISD2. The protein encoded by this gene is a zinc finger protein that localizes to the endoplasmic reticulum. The encoded protein binds an iron/sulfur cluster and may be involved in calcium homeostasis. Defects in this gene are a cause of Wolfram syndrome 2.

Target:	CDGSH Iron Sulfur Domain 2 (CISD2)
Clonality:	Polyclonal
Reactivity:	Human, Mouse, Rat
Tested Applications:	WB
Host:	Rabbit
Recommended dilutions:	WB: 1/500 - 1/2000. Optimal dilutions/concentrations should be determined by the end user.
Conjugation:	Unconjugated
Immunogen:	Recombinant fusion protein corresponding to human CISD2
Isotype:	IgG
Form:	Liquid
Purification:	Purified by affinity chromatography.
Storage:	Aliquot and store at -20°C. Avoid repeated freeze/thaw cycles.
UniProt Primary AC:	Q8N5K1 (UniProt , ExPASy)
Gene Symbol:	CISD2

Datasheet

Version: 4.0.0

Revision date: 12 Apr 2025



GeneID: [493856](#)

NCBI Accession: NP_001008389.1

KEGG: hsa:493856

String: [9606.ENSP00000273986](#)

Molecular Weight: Calculated MW: 15 kDa
Observed MW: 15 kDa

Buffer: PBS, pH 7.3, containing 0.02% sodium azide, 50% glycerol.

Concentration: 1 mg/ml

Note: THIS PRODUCT IS FOR RESEARCH USE ONLY. NOT FOR USE IN DIAGNOSTIC, THERAPEUTIC OR COSMETIC PROCEDURES. NOT FOR HUMAN OR ANIMAL CONSUMPTION.

For Reference Only